



**SPEECH LANGUAGE PATHOLOGIST PERFORMANCE
AND
EVALUATION SYSTEM**

(Revised 11/2014)



Fern Ridge Schools

Speech Language Pathologist Performance Review and Evaluation System

TABLE OF CONTENTS

Timeline of Teacher Evaluation and Observations.....	3
Contract Teacher: Performance Evaluation Flowchart.....	4-5
Probationary Teachers: Improvement Cycle Evaluation Flowchart.....	6
Domains: Guiding Questions	7-23
Formal Evaluation Form – Fern Ridge Schools Performance Evaluation Rubric.....	24-31
Yearly Self-Evaluation Form – Fern Ridge Schools Performance Evaluation Rubric.....	32-37
Goal-Setting Form.....	38-40
Informal Observation Form A.....	41
Informal Observation Form B.....	42
Professional Growth Action Plan.....	43
Professional Growth Action Plan Part 2.....	44
Glossary of Terms.....	45-46
Components of the Student Learning and Growth Goal Setting Process – Key Ideas.....	47



Timeline of Speech Language Pathologist Evaluation and Observations

The primary objective of an evaluation system is to improve instruction and to facilitate a positive learning environment where students experience success, growth, and achievement.

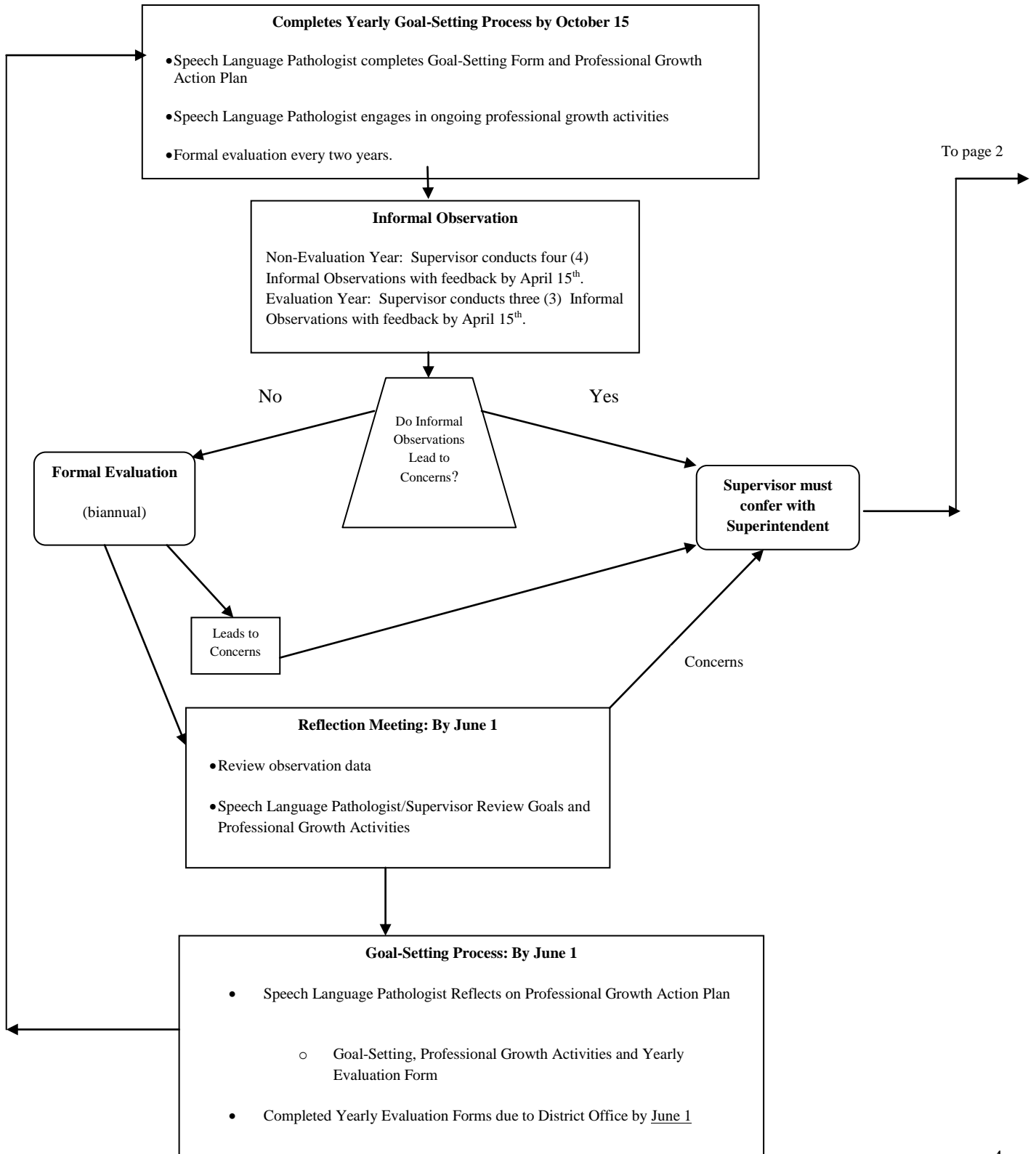
Evaluation is a collaborative, continual improvement process based on clear expectations and objective data, in which competence is verified, strengths are assessed, and excellence is acknowledged. Emphasis of the evaluation system should be professional growth where employees are empowered to be self-directed. Support and assistance are provided for individual teachers needing the opportunity to remedy specific weaknesses.

In addition to utilizing direct classroom observations, an evaluator may use a variety of student performance data, collaborative assignments, non-instructional duties, curricular responsibilities, and student input when formulating a final evaluation. Student feedback and/or performance data will not be used independently to formulate teacher evaluation.

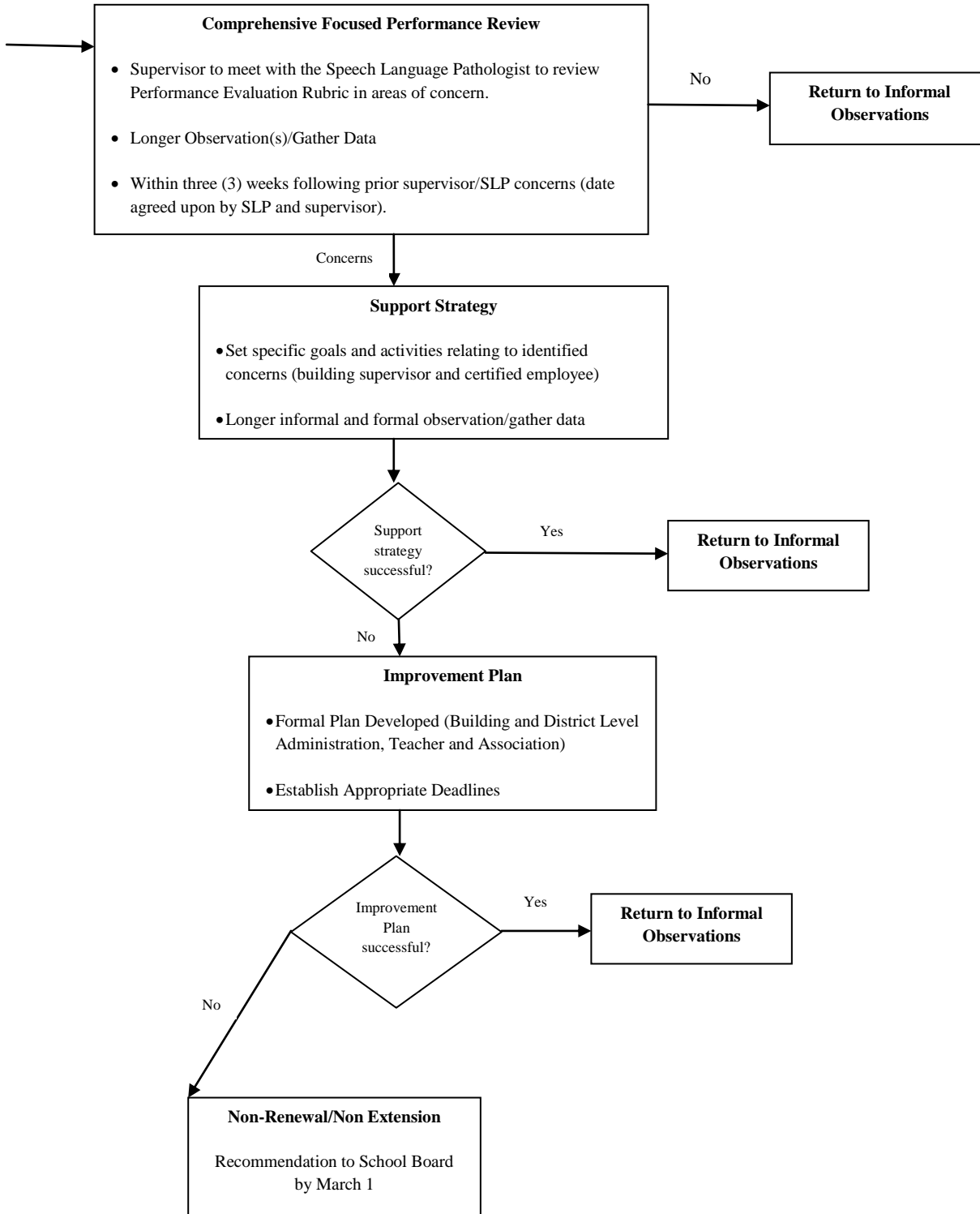
Probationary Speech Language Pathologist Timeline			
By October 15th	By January 1st	By March 1st	By June 1st
Yearly Self-Evaluation Form (pg. 32-37), Professional Growth Action Plan (pg. 42-43) and Goal-Setting Form (pg. 38) due to supervisor.	First Informal Observation (pg. 39-40) and first Formal Evaluation (pg. 25-31) with discussions. Formal Evaluation Form filed with the district office.	Second Informal Observation (pg. 39-40) and second Formal Evaluation (pg. 25-31) with discussions. Formal Evaluation Form filed with the district office.	Yearly Reflection Meeting with supervisor to go over Yearly Self-Evaluation Form (pg. 32-37), Professional Growth Action Plan (pg. 42-43) and Goal-Setting Form (pg. 38).
Contract Speech Language Pathologist Timeline			
By October 15th	By January 1st	By April 15th	By June 1st
Yearly Self-Evaluation Form (pg. 32-37), Professional Growth Action Plan (pg. 42-43) and Goal-Setting Form (pg. 38) due to supervisor.	Two Informal Observations (pg. 39-40) with discussions.	Non-Evaluation Year - Two Informal Observations (pg. 39-40) with discussions. Evaluation Year -One Informal Observations (pg. 39-40) and one Formal Evaluation Form (pg. 25-31). Formal Evaluation Form filed with the district office every other year.	Yearly Reflection Meeting with supervisor to go over Yearly Self-Evaluation Form (pg. 32-37), Professional Growth Action Plan (pg. 42-43) and Goal-Setting Form (pg. 38).



Contract Speech Language Pathologist: Performance Evaluation Flowchart (page 1)

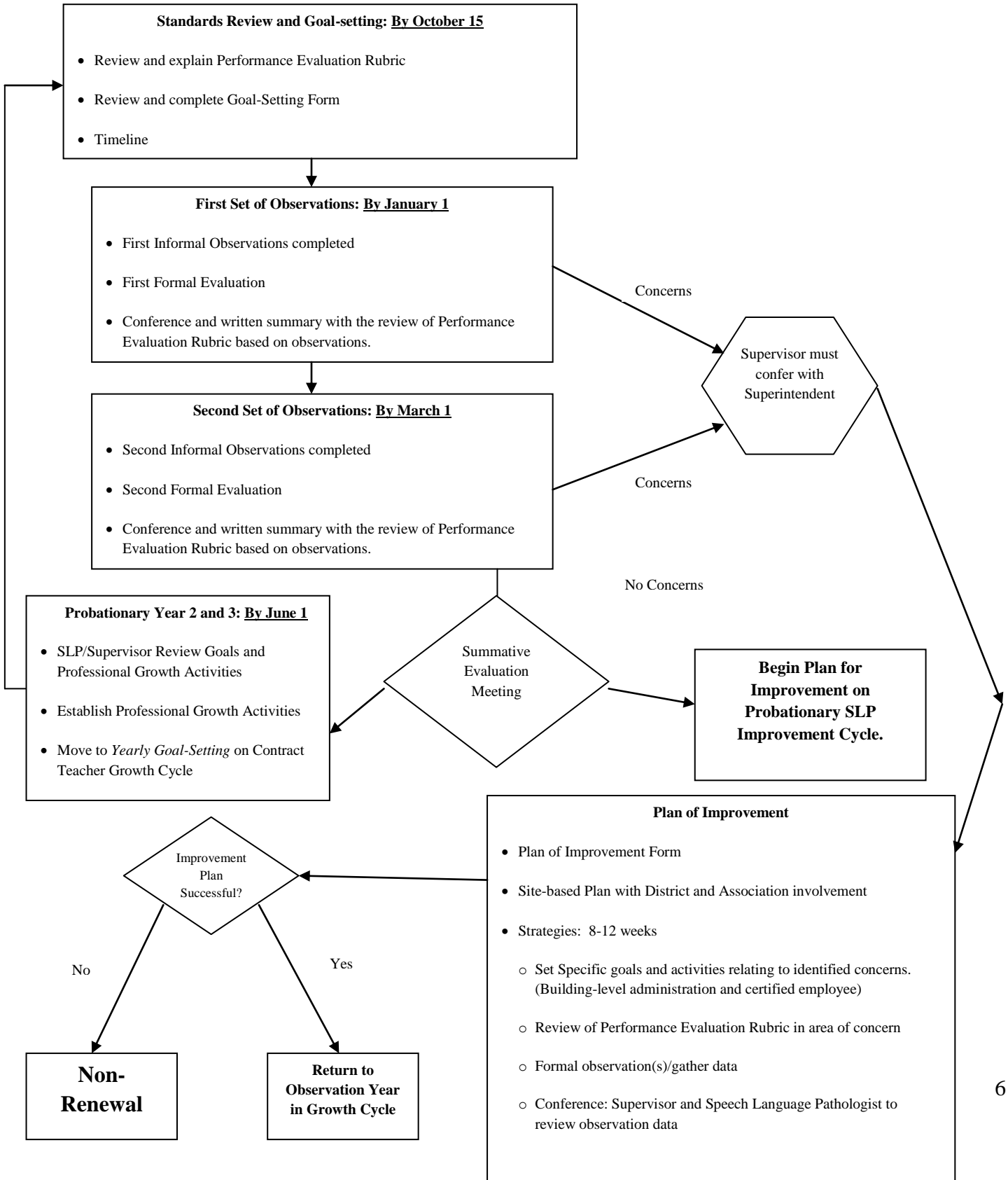


Contract Speech Language Pathologist: Performance Evaluation Flowchart (page 2)





Probationary Speech Language Pathologist: Improvement Cycle Evaluation Flowchart





FERN RIDGE SCHOOL DISTRICT 28J

Domain 1: Identification and Evaluation SLP Standard 1: Referral Process

Guiding Questions:

- Is the screening relevant to the needs of the student?
- Is the referral being conducted in a timely manner?
- Are the referral results conveyed to the team/teacher?

Highly Effective	Effective	Area for Growth	Does Not Meet
SLP is proactive in responding to referrals and completes highly competent screenings of student needs.	SLP responds to referrals and completes thorough screenings of student needs.	SLP responds to referrals when pressed and completes adequate screenings of students.	SLP fails to respond to referrals or completes hasty screenings of student needs.

Possible evidence to look for:

- Procedures for referrals and screening results are clear and communicated to staff and key stakeholders.
- RTI and EBISS documentation.



FERN RIDGE SCHOOL DISTRICT 28J

Domain 1: Identification and Evaluation SLP Standard 2: Assessment

Guiding Questions:

- Does the SLP use a variety of testing materials?
- What kind of assessment data does the SLP use to inform decision making?
- Does the SLP observe in multiple settings?

Highly Effective	Effective	Area for Growth	Does Not Meet
SLP uses and interprets a variety of non-discriminatory standardized and non-standardized assessments and observes in multiple contexts to evaluate students' strengths and needs.	SLP uses and interprets a variety of non-discriminatory standardized assessments to evaluate students' strengths and needs.	SLP uses and interprets limited assessments to evaluate students' strengths and needs.	SLP administers inappropriate assessments to evaluate students' strengths and needs. Does not interpret results accurately.

Possible evidence to look for:

- The SLP selects current, culturally sensitive, and evidence-based assessment techniques and tools relevant to the identified referral questions.
- The SLP obtains information about student's strengths and needs from a variety of sources.
- The SLP observes student within multiple contexts of performance.
- Assessments are performed, scored, and interpreted with accuracy.



Domain 1: Identification and Evaluation: SLP Standard 3: Documentation of Evaluation

Guiding Questions:

- Are the evaluation reports clearly written and understandable?
- Is the evaluation information presented to key stakeholders in a way that is clear and tied to educational performance?
- Is the SLP able to answer questions presented by key stakeholders?

Highly Effective	Effective	Area for Growth	Does Not Meet
Evaluation results are comprehensive, well written, and show a clear understanding of student's unique needs. Pertinent information, including specific recommendations that are relevant to evaluation findings, is provided to assist with planning program and determining eligibility.	Evaluation results show a clear understanding of student's unique needs. Pertinent information, including general recommendations, is provided to assist with planning program and determining eligibility.	Evaluation results show adequate understanding of student's needs. Limited information is provided to assist with planning program and determining eligibility.	Evaluation results show minimal understanding of student's needs. Inadequate information is provided to assist with planning program and determining eligibility.

Possible evidence to look for:

- The SLP analyzes and interpret information gained through assessment and state guidelines to determine student eligibilities.
- The SLP integrates results of assessments and develops recommendations.
- The SLP provides clear, concise written documentation to include relevant history and overall levels of communicative functioning.
- The SLPR effectively communicates how disability adversely affects students' educational performance.
- Content is clearly written and understandable.
- District and Federal time requirements are met.



FERN RIDGE SCHOOL DISTRICT 28J

Domain 2: Preparation and Planning SLP: Standard 4: Communication

Guiding Questions:

- Does SLP collaborate with parents, school personnel, and key stakeholders when developing programs and services for student?
- Does the SLP meet and/or communicate regularly with colleagues regarding students' needs?

Highly Effective	Effective	Area for Growth	Does Not Meet
SLP engages in routine and Exemplary communication with parents, school personnel, and key stakeholders. SLP uses and shares pertinent information to plan programs and services for students.	SLP engages in routine and effective communication with parents, school personnel, and key stakeholders. SLP uses pertinent information to plan programs and services for students.	SLP engages in some communication with parents, school personnel, and key stakeholders. SLP uses some information to plan programs and services for students.	SLP rarely engages in communication with parents, school personnel, and key stakeholders. SLP rarely uses information to plan programs and services for students.

Possible evidence to look for:

- The SLP is receptive to input from colleagues.
- The SLP encourages colleagues to share professional ideas, thoughts, and comments regarding students' educational needs.
- The SLP maintains documentation of communication with parents, school personnel, and key stakeholders.

Domain 2: Preparation and Planning SLP Standard 5: Goal Development

Guiding Questions:

- Is the SLP familiar with the Oregon Common core State Standards and how they influence speech-language goal development?
- Is the speech-language IEP goal(s) clear and measurable and based on current and relevant data?

Highly Effective	Effective	Area for Growth	Does Not Meet
SLP develops clear and measurable goals based on a variety of assessment results and input from the IEP team that are aligned with developmental norms and Oregon Common Core State Standards.	SLP develops measurable goals based on assessment results that are aligned with developmental norms and Oregon Common Core State Standards.	SLP rarely develops measurable goals. Developed goals are based on limited information and are sometimes aligned with developmental norms and Oregon Common Core State Standards.	SLP develops non-measurable goals that are not aligned with developmental norms and Oregon Common Core State Standards.

Possible evidence to look for:

- The SLP is familiar with students' IEP goals and they are readily available.
- The SLP draws from Common Core State Standards when writing IEP goals.
- The SLP uses a variety of formal and informal assessment results when developing goals.



Domain 2: Preparation and Planning SLP Standard 6: Materials

Guiding Questions:

- Does the SLP use a variety of materials to meet the needs of the students?
- Does the SLP connect materials to the learning objectives of the session?
- Does the SLP use developmentally appropriate materials?

Highly Effective	Effective	Area for Growth	Does Not Meet
SLP selects, organizes, creates and adapts innovative and developmentally appropriate materials for the students' individual communication goal(s)/need(s). SLP shares materials with colleagues.	SLP selects, organizes, and adapts relevant and developmentally appropriate materials for the students' individual communication goal(s)/need(s).	SLP selects materials that are somewhat relevant and developmentally appropriate for the students' individual communication goal(s)/need(s).	SLP uses limited materials that are not connected or relevant to the students' individual communication goal(s)/need(s).

Possible evidence to look for:

- The SLP selects/develops unique materials to meet their students' needs.
- The SLP adapts/uses classroom curriculum.
- The SLP shares materials with colleagues.
- The SLP is able to modify materials during therapy sessions, as needed.



FERN RIDGE SCHOOL DISTRICT 28J

Domain 3: Delivery of Service SLP Standard 7: Intervention

Guiding Questions:

- Does the SLP implement evidence-based interventions when supporting student goals and objectives?
- Does the SLP use a variety of tools and strategies to engage and motivate students?
- Does the SLP provide timely feedback/reinforcement?

Highly Effective	Effective	Area for Growth	Does Not Meet
SLP systematically implements evidence-based interventions to foster communicative competence and provides consistent feedback and reinforcement to students.	SLP implements evidence-based interventions and provides some feedback and reinforcement to students.	SLP occasionally implements evidence-based interventions and provides inconsistent feedback and reinforcement to students.	SLP rarely implements evidence-based interventions and does not provide feedback and reinforcement to students.

Possible evidence to look for:

- The SLP can describe best practices when it comes to instruction and research.
- The SLP promotes generalization of therapeutic interventions.
- The SLP implements the service delivery model most appropriate to the student's communication challenges and needs.
- The SLP expresses feedback clearly and respectfully.
- The therapy activities are appropriate for the student's age, grade, and cognitive level as well as interest and aptitudes.



FERN RIDGE SCHOOL DISTRICT 28J

Domain 3: Delivery of Service SLP Standard 8: Knowledge of Student Need

Guiding Questions:

- Does the SLP understand the educational needs of his/her student?
- Is the SLP familiar with the students' IEP goals?
- Does the SLP collaborate with school personnel to determine student needs and how to address them?

Highly Effective	Effective	Area for Growth	Does Not Meet
SLP displays robust understanding of how disabilities impact students' attitudes, behaviors and performances. Utilizes this knowledge to create meaningful and realistic opportunities and to differentiate instruction.	SLP displays solid understanding of how disabilities impact students' attitudes, behaviors and educational performances. Utilizes this knowledge to differentiate instruction.	SLP displays general understanding of how disabilities impact students' attitudes, behaviors and educational performances. Occasionally utilizes this knowledge to differentiate instruction.	SLP displays minimal understanding of how disabilities impact students' attitudes, behaviors and educational performances. Does not differentiate instruction.

Possible evidence to look for:

- The SLP orchestrates Exemplary strategies, materials, and groupings to involve and motivate students.
- Students are actively engaged in learning.
- The SLP capitalizes on teachable moments.
- The SLP is effectively able to communicate learning goals and objectives to students.
- The planned instruction is relevant to student learning styles and needs and to cultural differences.



FERN RIDGE SCHOOL DISTRICT 28J

Domain 3: Delivery of Services SLP Standard 9: Flexibility/Responsiveness

Guiding Questions:

- Does the SLP modify therapeutic instruction based on data gathered during therapy?
- Does the SLP use a variety of scaffolding techniques?
- Does the SLP use frequent assessment techniques to monitor and adjust their instruction in a timely manner?

Highly Effective	Effective	Area for Growth	Does Not Meet
SLP is continually seeking ways to improve treatment and makes changes as appropriate in response to student, parent, and/or teacher input.	SLP makes revisions in treatment when confronted with evidence of the need for change.	SLP considers changes in treatment when confronted with evidence of the need for change.	SLP adhere to the plan or program in spite of evidence of its inadequacy.

Possible evidence to look for:

- Students are actively engaged in learning.
- Students understand and learn what is delivered.
- A variety of formative and summative assessments are in use.
- The SLP capitalizes on teachable moments.
- The SLP helps colleagues adapt and differentiate instruction for students.



FERN RIDGE SCHOOL DISTRICT 28J

Domain 3: Delivery of Services SLP Standard 10: Student Interactions

Guiding Questions:

- Do students feel safe, respected and valued?
- How does the SLP respond to students' treatment of each other in the therapy environment?
- Does the SLP make connections with students?

Highly Effective	Effective	Area for Growth	Does Not Meet
SLP shows warmth, caring, respect, and fairness for all students and builds strong relationships. Earns students' respect and creates a climate in which disruption of learning is extremely rare and handled promptly and effectively.	SLP is fair and respectful toward students and builds positive relationships. Builds a culture of respect within the learning environment.	SLP is fair and respectful toward most students and builds positive relationships with some. Wins the respect of some students but there are regular disruptions in the learning environment.	SLP is sometimes unfair and disrespectful to the group; plays favorites. Is not respected by students and the learning environment is frequently chaotic.

Possible evidence to look for:

- The SLP communicates with students in a respectful and positive manner in all situations.
- The SLP models effective communication, empathy and respect.
- The SLP's non-verbal cues match what he/she is assaying to the student.
- The SLP is poised and dynamic and promptly addresses virtually all discipline problems.
- Students are respectfully engaged in learning and activities?



FERN RIDGE SCHOOL DISTRICT 28J

Domain 3: Delivery of Services SLP Standard 11: Reflection

Guiding Questions:

- Does the SLP take time to reflect on a lesson?
- Does the SLP modify therapy based upon reflective analysis?

Highly Effective	Effective	Area for Growth	Does Not Meet
SLP's reflection is highly accurate and perceptive, citing specific examples that were not fully successful for at least some students. SLP draws on an extensive repertoire including input from colleagues to identify alternative strategies.	SLP's reflection provides an accurate and objective description of practice, citing specific positive and negative characteristics. SLP makes some specific suggestions as to how the therapy program might be improved.	SLP's reflection on practice is moderately accurate and objective without citing specific examples, and with only global suggestions as to how it might be improved.	SLP does not reflect on practice, or the reflections are inaccurate or self-serving.

Possible evidence to look for:

- When appropriate, SLP utilizes student feedback.
- The SLP is constantly pursuing professional growth opportunities and applies what he/she learns.
- The SLP can describe best practices when it comes to instruction and research.
- The SLP reviews speech, language, and hearing literature and makes use of new information during therapy.
- The SLP works with colleagues to reflect on what worked and what didn't and continuously improves instruction.



FERN RIDGE SCHOOL DISTRICT 28J

Domain 4: Management SLP Standard 12: Service Delivery

Guiding Questions:

- Does the SLP maximize the use of time and resources?
- Is the SLP able to effectively schedule within the educational setting?
- Does the SLP meet the SDI time as designated on IEP for students on their caseload?

Highly Effective	Effective	Area for Growth	Does Not Meet
SLP uses a variety of creative strategies that provide efficient service delivery models to meet student needs.	SLP uses a variety of strategies that provide efficient service delivery models to meet student needs.	SLP uses limited service delivery models to meet student needs.	SLP does not vary service delivery model to meet student needs.

Possible evidence to look for:

- The SLP collaborates with teachers and staff to determine what is best for students.
- The SLP applies creative strategies within the framework of the educational setting.



FERN RIDGE SCHOOL DISTRICT 28J

Domain 4: Management SLP Standard 13: Caseload

Guiding Questions:

- Does the SLP serve students regularly and consistently?
- Does the SLP participate in intervention team meetings?
- Is the SLP able to manage a diverse caseload?

Highly Effective	Effective	Area for Growth	Does Not Meet
SLP continually makes decisions on eligibility, including dismissal. Provides prompt and consistent intervention to special education students. Supports general education initiatives that focus on achievement for all students.	SLP continually makes decisions on eligibility while serving a variety of special education students with speech/language services on their IEP.	SLP maintains caseload while limiting service delivery to only students who have a Communication Disorder eligibility.	SLP inefficiently manages caseload and inconsistently serves students.

Possible evidence to look for:

- The SLP continually evaluates caseload.
- The SLP collaborates with staff to determine needs across educational settings.
- The SLP serves on teams that promote the use of data-driven instruction, evidence-based practices and the use of problem solving models.



FERN RIDGE SCHOOL DISTRICT 28J

Domain 5: Professional Responsibilities SLPC Standard 14: Professionalism

Guiding Questions:

- Does the SLP respond professionally to all constituents: parents, students, colleagues, supervisors and the community?
- What kind of recordkeeping and documentation system does the SLP use to keep track of communication with all stakeholders? How effective is that system?
- Does the SLP reliably perform required duties as assigned?

Highly Effective	Effective	Area for Growth	Does Not Meet
SLP presents self as a consummate professional and always observes appropriate boundaries.	SLP demonstrates professional demeanor/behavior and maintains appropriate boundaries.	SLP occasionally acts and/or present self in an unprofessional manner and disrespects boundaries.	SLP frequently acts and/or presents self in an unprofessional manner and violates boundaries.

Possible evidence to look for:

- The SLP communicates in a professional, respectful and positive manner to district/building personnel.
- The SLP's recordkeeping system is clear, organized, up-to-date, and easy to understand.
- The SLP can be counted on to complete all required duties, reports and paperwork in a timely manner (e.g., attendance, email, etc.).
- The SLP resolves concerns and problems in an appropriate and timely manner.
- Professionalism may include regular attendance and punctuality, appropriateness of dress, ethical and honest judgment, respect of boundaries and confidentiality, and among other qualities applicable to the position and school expectations.



FERN RIDGE SCHOOL DISTRICT 28J

Domain 5: Professional Responsibilities SLP Standard 15: Collaboration

Guiding Questions:

- During the evaluation and IEP process, is the SLP involved with colleagues?
- To what extent is SLP involved with collaboration?
- Does the SLP have respectful relationship with colleagues?

Highly Effective	Effective	Area for Growth	Does Not Meet
Collaborates with classroom teachers, other professionals, and peers when sharing ideas, looking at student work, and utilizing data to drive instruction.	Collaborates with classroom teachers, other professionals, and peers to share therapy ideas while looking at student work.	Meets infrequently with classroom teachers, other professionals, to share therapy ideas.	Does not meet with classroom teachers, other professionals, and peers and is not open to collaboration.

Possible evidence to look for:

- The SLP highly values collaboration and positive relationships.
- The SLP meets frequently with collaboration teams, such as PLCs, SET, and/or EBISS.
- The SLP is receptive to input from colleagues, outside agencies, and other stakeholders to provide a system of support that enhances the student(S) learning experiences.
- The SLP encourages colleagues to share professional ideas, thoughts, and comments regarding learning?
- The SLP shares information, ideas, materials and resources with peers and others.



Domain 5: Professional Responsibilities SLP Standard 16: Self-Improvement

Guiding Questions:

- Is the SLP a self-directed learner when it comes to professional growth opportunities?
- Does the SLP seek involvement in activities that will further his/her professional growth and promote student learning?
- Does the SLP earn continuing education or professional development units to meet requirements for the Oregon Board of Examiners' licensing requirements?

Highly Effective	Effective	Area for Growth	Does Not Meet
SLP seeks out best practices, feedback, and suggestions, which are integrated into practice. Active participant of professional workshops, study groups, reading and/or research to improve speech-language learning.	SLP listens thoughtfully to other viewpoints and responds constructively to suggestions and criticism. Seeks out effective therapy ideas from colleagues and other sources.	SLP keeps an eye out for new ideas to improve therapy, but implementation is with mixed results. Shows minimal interest in listening to feedback and suggestions.	SLP is not open to ideas for improving therapy and learning. Is defensive and/or resistant to changing professional practices.

Possible evidence to look for:

- The SLP can describe best practices when it comes to instruction, content area, and research.
- The SLP is constantly seeking to improve his/her performance through professional growth opportunities as a life-long learner by reviewing literature and sharing with others.
- The SLP is involved in professional activities that address possible areas for growth.
- The SLP presents to his/her peers.



FERN RIDGE SCHOOL DISTRICT 28J

Domain 5: Professional Responsibilities SLP Standard 17: Rules, Regulations, Laws, and Ethical Standards

Guiding Questions:

- Does the SLP hold or is working towards an Oregon Board of Examiners for Speech Language Pathology License?
- Does the SLP adhere to federal and local policies and procedures?
- Does the SLP consult with colleagues/administrators regarding ethical/legal issues?

Highly Effective	Effective	Area for Growth	Does Not Meet
SLP demonstrates professional performance and consults with colleagues regarding ethical and/or litigious situations while upholding the ethical behavior and rules and regulations as outlines in the Oregon Board of Examiners for Speech Language Pathology.	SLP upholds the importance of ethical behavior rules and regulations as outlined in the Oregon Board of Examiners for Speech Language Pathology.	SLP understands the importance of ethical behavior and rules and regulations as outlined in the Oregon Board of Examiners for Speech Language Pathology.	SLP does not demonstrate ethical behavior or follow the rules and regulations as outlined in the Oregon Board of Examiners for Speech Language Pathology.

Possible evidence to look for:

- The SLP maintains confidentiality of students' records.
- The SLP communicates as needed with colleagues/administrators regarding procedural and compliance issues.
- THE SLP maintains his/her record as outlined in the Oregon Board of Examiners for Speech Language Pathology.



Domain 5: Professional Responsibilities SLP Standard 18: Supervision (when applicable)

Guiding Questions:

- Does the SLP have a Speech-Language Pathologist – Assistant (SLP-A)? **(If “no” this standard is not applicable)**
- Does the SLP have positive working relationships with SLP-A?
- Does the SLP provide ongoing and supportive feedback in a timely manner?

Highly Effective	Effective	Area for Growth	Does Not Meet
SLP supervises and trains SLP-A while providing ongoing feedback and support including information regarding students' disabilities, therapy deliver, therapy planning, and data collection while maintaining all required records on personnel they supervise.	SLP supervises and trains SLP-A while providing ongoing feedback and support, when requested, included information regarding students' disabilities, therapy delivery, therapy planning, and data collection while maintaining all required records.	SLP supervises and trains SLP-A providing limited support while maintaining all required records.	SLP fails to provide support to SLP-A and does not maintain proper records.

Possible evidence to look for:

- The SLP maintains records on supervision.
- The SLP follows the guidelines for supervision as outlined by the Oregon Board of Examiners for Speech Language Pathology.?
- The SLP clearly defines expectations for the SLP-A.
- The SLP establishes a positive working relationship with their SLP-A.
- The SLP is responsible for the extent, type and quality of services provided by each SLP-A.



FERN RIDGE SCHOOL DISTRICT 28J

Formal Evaluation Form

Speech Language Pathologist: _____ Date: _____
 Site: _____ Supervisor: _____
 Assignment: _____ Year: _____ Probationary: _____ Contract: _____

Prior to the yearly reflection meeting, the supervisor completes the rubric checking the box for the performance level for each standard. The supervisor then shares the completed rubric with the teacher at the yearly reflection meeting.

Fern Ridge Schools Performance Evaluation Rubric

#	Domain: Standard	Highly Effective 4	Effective 3	Area of Growth 2	Does Not Meet 1	Evaluator Rating
1.1	Identification and Evaluation: Referral Process	SLP is proactive in responding to referrals and completes highly competent screenings of student needs.	SLP responds to referrals and completes thorough screenings of student needs	SLP responds to referrals when pressed and completes adequate screenings of students.	SLP fails to respond to referrals or completes hasty screenings of student needs.	
1.2	Identification and Evaluation: Assessment	SLP uses and interprets a variety of non-discriminatory standardized and non-standardized assessments and observes in multiple contexts to evaluate students' strengths and needs.	SLP uses and interprets a variety of non-discriminatory standardized assessments to evaluate students' strengths and needs.	SLP uses and interprets limited assessments to evaluate student strengths and needs.	SLP administers inappropriate assessments to evaluate student strengths and needs. Does not interpret results accurately.	



FERN RIDGE SCHOOL DISTRICT 28J

#	Domain: Standard	Highly Effective 4	Effective 3	Area of Growth 2	Does Not Meet 1	Evaluator Rating
1.3	Identification and Evaluation: Documentation of Evaluation	Evaluation results are comprehensive, well written, and show a clear understanding of student's unique needs. Pertinent information, including specific recommendations that are relevant to evaluation findings, is provided to assist with program planning and eligibility determination.	Evaluation results show a clear understanding of student's unique needs. Pertinent information, including general recommendations, is provided to assist with program planning and eligibility determination.	Evaluation results show adequate understanding of student's needs. Limited information is provided to assist with program planning and eligibility determination.	Evaluation results show minimal understanding of student's needs. Inadequate information is provided to assist with program planning and eligibility determination.	
2.4	Preparation and Planning: Communication	SLP engages in routine and Exemplary communication with parents, school personnel, and key stakeholders. Uses and shares pertinent information to plan program and services for students.	SLP engages in routine and effective communication with parents, school personnel, and key stakeholders. SLP uses pertinent information to plan programs and services for students.	SLP engages in some communication with parents, school personnel, and key stakeholders. Uses some information to plan programs and services for students.	SLP rarely engages in communication with parents, school personnel, and key stakeholders. Rarely uses information to plan programs and services for students.	
2.5	Preparation and Planning: Goal Development	SLP develops clear and measureable goals based on a variety of assessment results and input from the IEP team that are aligned with developmental norms and Oregon Common Core State Standards.	SLP develops measureable goals based on assessment results that are aligned with developmental norms and Oregon Common Core State Standards.	SLP rarely develops measurable goals. Developed goals are based on limited information and are sometimes aligned with developmental norms and Oregon Common Core State Standards.	SLP develops non-measureable goals that are not aligned with developmental norms and Oregon Common Core State Standards.	



FERN RIDGE SCHOOL DISTRICT 28J

#	Domain: Standard	Highly Effective 4	Effective 3	Area of Growth 2	Does Not Meet 1	Evaluator Rating
2.6	Preparation and Planning: Interventions	SLP selects, organizes, creates and adapts innovative and developmentally appropriate materials for the students' individual communication goal(s)/need(s). SLP shares materials with colleagues.	SLP selects, organizes, and adapts relevant and developmentally appropriate materials for the students' individual communication goal(s)/need(s).	SLP selects materials that are somewhat relevant and developmentally appropriate for the students' individual communication goal(s)/need(s).	SLP uses limited materials that are not connected or relevant to the students' individual communication goal(s)/need(s).	
3.7	Delivery of Service: Interventions	SLP systematically implements evidence-based interventions to foster communicative competence and provides consistent feedback and reinforcement to students.	SLP implements evidence-based interventions and provides some feedback and reinforcement to students.	SLP occasionally implements evidence-based interventions and provides inconsistent feedback and reinforcement to students.	SLP rarely implements evidence-based interventions and does not provide feedback and reinforcement to students.	
3.8	Deliver of Service: Knowledge of Student Need	SLP displays robust understanding of how disabilities impact students' attitudes, behaviors and performances. Utilizes this knowledge to create meaningful and realistic opportunities and to differentiate instruction.	SLP displays solid understanding of how disabilities impact students' attitudes, behaviors and educational performances. Utilizes this knowledge to differentiate instruction.	SLP displays general understanding of how disabilities impact students' attitudes, behaviors and educational performances. Occasionally utilizes this knowledge to differentiate instruction.	SLP displays minimal understanding of how disabilities impact students' attitudes, behaviors and educational performances. Does not differentiate instruction.	
3.9	Delivery of Service: Flexibility/ Responsiveness	SLP is continually seeking ways to improve treatment and makes changes as appropriate in response to student, parent, and/or teacher input.	SLP makes revisions in treatment when confronted with evidence of the need for change.	SLP considers changes in treatment when confronted with evidence of the need for change.	SLP adheres to the plan or program in spite of evidence of its inadequacy.	



FERN RIDGE SCHOOL DISTRICT 28J

	Domain: Standard	Highly Effective 4	Effective 3	Area of Growth 2	Does Not Meet 1	Evaluator Rating
3.10	Delivery of Service: Student Interactions	SLP shows warmth, caring, respect, and fairness for all students and builds strong relationships. Earns students' respect and creates a climate in which disruption of learning is extremely rare and handled promptly and effectively.	SLP is fair and respectful toward students and builds positive relationships. Builds a culture of respect within the learning environment.	SLP is fair and respectful toward most students and builds positive relationships with some. Wins the respect of some students but there are regular disruptions in the learning environment.	SLP is sometimes unfair and disrespectful to the group; plays favorites. Is not respected by students and the learning environment is frequently chaotic.	
3.11	Delivery of Service: Reflection	SLP's reflection is highly accurate and perceptive, citing specific examples that were not fully successful for at least some students. SLP draws on an extensive repertoire including input from colleagues to identify alternative strategies.	SLP's reflection provides an accurate and objective description of practice, citing specific positive and negative characteristics. SLP makes some specific suggestions as to how the therapy program might be improved.	SLP's reflection on practice is moderately accurate and objective without citing specific examples, and with only global suggestions as to how it might be improved.	SP does not reflect on practice, or the reflections are inaccurate or self-serving.	
4.13	Management: Caseload	SLP continually makes decisions on eligibility, including dismissal. Provides prompt and consistent intervention to special education students. Supports general education initiatives that focus on achievement for all students.	SLP continually makes decisions on eligibility while serving a variety of special education students with speech/language services on their IEP.	SLP maintains caseload while limiting service delivery to only students who have a Communication Disorder eligibility.	SP inefficiently manages caseload and inconsistently serves students.	
5.14	Professional Responsibilities: Professionalism	SLP present self as a consummate professional and always observes appropriate boundaries.	SLP demonstrates professional demeanor/behavior and maintains appropriate boundaries.	SLP occasionally acts and/or presents self in an unprofessional manner and disrespects boundaries.	SLP frequently acts and/or present self in an unprofessional manner and violates boundaries.	



FERN RIDGE SCHOOL DISTRICT 28J

	Domain: Standard	Highly Effective 4	Effective 3	Area of Growth 2	Does Not Meet 1	Evaluator Rating
5.15	Professional Responsibilities: Collaboration	Collaborates with classroom teachers, other professionals, and peers when sharing ideas, looking at student work, and utilizing data to drive instruction.	Collaborates with classroom teachers, other professionals, and peers to share therapy ideas while looking at student work.	Meets infrequently with classroom teachers, other professionals, to share therapy ideas.	Does not meet with classroom teachers, other professionals, and peers and is not open to collaboration.	
5.16	Professional Responsibilities: Self-Improvement	SLP seeks out best practices, feedback, and suggestions, which are integrated into practice. Active participant of professional workshops, study groups, reading and/or research to improve speech-language learning.	SLP listens thoughtfully to other viewpoints and responds constructively to suggestions and criticism. Seeks out effective therapy ideas from colleagues and other sources.	SLP keeps an eye out for new ideas to improve therapy, but implementation is with mixed results. Shows minimal interest in listening to feedback and suggestions.	SLP is not open to ideas for improving therapy and learning. Is defensive and/or resistant to changing professional practices.	
5.17	Professional Responsibilities: Rules, Regulations, Laws, and Ethical Standards	SLP demonstrates professional performance and consults with colleagues regarding ethical and/or litigious situations while upholding the ethical behavior and rules and regulations as outline in the Oregon Board of Examiners for Speech Language Pathology.	SLP upholds the importance of ethical behavior rules and regulations as outlined in the Oregon Board of Examiners for Speech Language Pathology.	SLP understands the importance of ethical behavior and rules and regulations as outlined in the Oregon Board of Examiners for Speech Language Pathology.	SLP does not demonstrate ethical behavior or follow the rules and regulations as outlined in the Oregon Board of Examiners for Speech Language Pathology.	



FERN RIDGE SCHOOL DISTRICT 28J

	Domain: Standard	Highly Effective 4	Effective 3	Area of Growth 2	Does Not Meet 1	Evaluator Rating
5.18	Professional Responsibilities: Supervision <i>(when applicable)</i>	SLP supervises and trains SLP-A while providing ongoing feedback and support including information regarding students' disabilities, therapy deliver, therapy planning, and data collection while maintaining all required records on personnel they supervise.	SLP supervises and trains SLP-A while providing ongoing feedback and support, when requested, including information regarding students' disabilities, therapy delivery, therapy planning, and data collection while maintaining all required records.	SLP supervises and trains SLP-A providing limited support while maintaining all required records.	SLP fails to provide support to SLP-A and does not maintain proper records.	
5.19	Professional Responsibilities: Working with Teams	Elicits all voices in planning units, sharing teaching ideas, looking at student work and utilizing data to change instruction. Values and appreciates colleagues.	Collaborates with colleagues to plan units, share teaching ideas and look at student work. Seeks input from colleagues.	Meets regularly with colleagues to share ideas about teaching and students and includes colleagues when necessary.	Meets infrequently with colleagues and is not open to collaboration. Is not respectful of colleagues when communicating with them.	
5.20	Professional Responsibilities: Self-improvement	Seeks out best-practices, feedback, and suggestions, which are integrated into practice. Active participant of professional workshops, study groups, reading and/or research to improve teaching and learning.	Listens thoughtfully to other viewpoints and responds constructively to suggestions and criticism. Seeks out effective teaching ideas for supervisor, colleagues and other sources.	Keeps an eye out for new ideas to improve teaching and learning, but implementation is with mixed results. Shows minimal interest in listening to feedback and suggestions.	Is not open to ideas for improving teaching and learning. Is defensive and/or resistant to changing professional practices.	



FERN RIDGE SCHOOL DISTRICT 28J

Speech Language Pathologist Professional Practice & Professional Responsibilities Rating Score (3.6–4.0 = 4 PP/PR, 2.81–3.59 = 3 PP/PR, 1.99-2.8 = PP/PR*, <1.99 = 1 PP/PR):

*PP/PR Scoring Rule: If the educator scores two 1's in any PP/PR component and his/her average score falls between 1.99-2.499, the educator's performance level cannot be rated above a 1.

Student Growth Goal Level:

Overall rating based on Matrix:

Y-AXIS: Professional Practice & Professional Responsibilities (PP/PR)	LEVEL 4 <i>(Highest)</i>	COLLEGIAL *SLG INQUIRY 3	FACILITATIVE or COLLEGIAL *SLG INQUIRY 3 or 4	FACILITATIVE 4	FACILITATIVE 4
	LEVEL 3	COLLEGIAL or CONSULTING *SLG INQUIRY 2 or 3	COLLEGIAL 3	COLLEGIAL 3	COLLEGIAL 3
	LEVEL 2	CONSULTING 2	CONSULTING 2	CONSULTING 2	COLLEGIAL or CONSULTING *PP/PR INQUIRY 2 or 3
	LEVEL 1 <i>(Lowest)</i>	DIRECTED 1	DIRECTED 1	CONSULTING or DIRECTED *PP/PR INQUIRY 1 or 2	CONSULTING *PP/PR INQUIRY 2
		LEVEL 1	LEVEL 2	LEVEL 3	LEVEL 4
X-AXIS: Rating on Student Learning and Growth					

*Ratings in these areas require an inquiry process in order to determine a summative performance level and Professional Growth Plan.



Speech Language Pathologist's response, if desired, as provided by law:

The following attachments are part of this report (including goal-setting form):

Supervisor's Comments:

Supervisor's Recommendations:

- Continuation of Employment
- Program of Assistance for Improvement
- Termination of Employment
- Other: Hired temporary this school year only

This is to certify we have read and discussed the above report: _____
 Speech Language Pathologist Date Supervisor Date

Original to Personnel File at District Office



FERN RIDGE SCHOOL DISTRICT 28J

Yearly Self-Evaluation Form

Speech Language Pathologist: _____ Date: _____
 Site: _____ Supervisor: _____
 Assignment: _____ Year: _____ Probationary: _____ Contract: _____

Prior to the yearly reflection meeting, the supervisor completes the rubric checking the box for the performance level for each standard. The supervisor then shares the completed rubric with the teacher at the yearly reflection meeting.

Fern Ridge Schools Performance Evaluation Rubric

#	Domain: Standard	Highly Effective 4	Effective 3	Area of Growth 2	Does Not Meet 1	Evaluator Rating
1.1	Identification and Evaluation: Referral Process	SLP is proactive in responding to referrals and completes highly competent screenings of student needs.	SLP responds to referrals and completes thorough screenings of student needs	SLP responds to referrals when pressed and completes adequate screenings of students.	SLP fails to respond to referrals or completes hasty screenings of student needs.	
1.2	Identification and Evaluation: Assessment	SLP uses and interprets a variety of non-discriminatory standardized and non-standardized assessments and observes in multiple contexts to evaluate students' strengths and needs.	SLP uses and interprets a variety of non-discriminatory standardized assessments to evaluate students' strengths and needs.	SLP uses and interprets limited assessments to evaluate student strengths and needs.	SLP administers inappropriate assessments to evaluate student strengths and needs. Does not interpret results accurately.	



FERN RIDGE SCHOOL DISTRICT 28J

#	Domain: Standard	Highly Effective 4	Effective 3	Area of Growth 2	Does Not Meet 1	Evaluator Rating
1.3	Identification and Evaluation: Documentation of Evaluation	Evaluation results are comprehensive, well written, and show a clear understanding of student's unique needs. Pertinent information, including specific recommendations that are relevant to evaluation findings, is provided to assist with program planning and eligibility determination.	Evaluation results show a clear understanding of student's unique needs. Pertinent information, including general recommendations, is provided to assist with program planning and eligibility determination.	Evaluation results show adequate understanding of student's needs. Limited information is provided to assist with program planning and eligibility determination.	Evaluation results show minimal understanding of student's needs. Inadequate information is provided to assist with program planning and eligibility determination.	
2.4	Preparation and Planning: Communication	SLP engages in routine and Exemplary communication with parents, school personnel, and key stakeholders. Uses and shares pertinent information to plan program and services for students.	SLP engages in routine and effective communication with parents, school personnel, and key stakeholders. SLP uses pertinent information to plan programs and services for students.	SLP engages in some communication with parents, school personnel, and key stakeholders. Uses some information to plan programs and services for students.	SLP rarely engages in communication with parents, school personnel, and key stakeholders. Rarely uses information to plan programs and services for students.	
2.5	Preparation and Planning: Goal Development	SLP develops clear and measurable goals based on a variety of assessment results and input from the IEP team that are aligned with developmental norms and Oregon Common Core State Standards.	SLP develops measurable goals based on assessment results that are aligned with developmental norms and Oregon Common Core State Standards.	SLP rarely develops measurable goals. Developed goals are based on limited information and are sometimes aligned with developmental norms and Oregon Common Core State Standards.	SLP develops non-measurable goals that are not aligned with developmental norms and Oregon Common Core State Standards.	



FERN RIDGE SCHOOL DISTRICT 28J

#	Domain: Standard	Highly Effective 4	Effective 3	Area of Growth 2	Does Not Meet 1	Evaluator Rating
2.6	Preparation and Planning: Interventions	SLP selects, organizes, creates and adapts innovative and developmentally appropriate materials for the students' individual communication goal(s)/need(s). SLP shares materials with colleagues.	SLP selects, organizes, and adapts relevant and developmentally appropriate materials for the students' individual communication goal(s)/need(s).	SLP selects materials that are somewhat relevant and developmentally appropriate for the students' individual communication goal(s)/need(s).	SLP uses limited materials that are not connected or relevant to the students' individual communication goal(s)/need(s).	
3.7	Delivery of Service: Interventions	SLP systematically implements evidence-based interventions to foster communicative competence and provides consistent feedback and reinforcement to students.	SLP implements evidence-based interventions and provides some feedback and reinforcement to students.	SLP occasionally implements evidence-based interventions and provides inconsistent feedback and reinforcement to students.	SLP rarely implements evidence-based interventions and does not provide feedback and reinforcement to students.	
3.8	Deliver of Service: Knowledge of Student Need	SLP displays robust understanding of how disabilities impact students' attitudes, behaviors and performances. Utilizes this knowledge to create meaningful and realistic opportunities and to differentiate instruction.	SLP displays solid understanding of how disabilities impact students' attitudes, behaviors and educational performances. Utilizes this knowledge to differentiate instruction.	SLP displays general understanding of how disabilities impact students' attitudes, behaviors and educational performances. Occasionally utilizes this knowledge to differentiate instruction.	SLP displays minimal understanding of how disabilities impact students' attitudes, behaviors and educational performances. Does not differentiate instruction.	
3.9	Delivery of Service: Flexibility/ Responsiveness	SLP is continually seeking ways to improve treatment and makes changes as appropriate in response to student, parent, and/or teacher input.	SLP makes revisions in treatment when confronted with evidence of the need for change.	SLP considers changes in treatment when confronted with evidence of the need for change.	SLP adheres to the plan or program in spite of evidence of its inadequacy.	



FERN RIDGE SCHOOL DISTRICT 28J

	Domain: Standard	Highly Effective 4	Effective 3	Area of Growth 2	Does Not Meet 1	Evaluator Rating
3.10	Delivery of Service: Student Interactions	SLP shows warmth, caring, respect, and fairness for all students and builds strong relationships. Earns students' respect and creates a climate in which disruption of learning is extremely rare and handled promptly and effectively.	SLP is fair and respectful toward students and builds positive relationships. Builds a culture of respect within the learning environment.	SLP is fair and respectful toward most students and builds positive relationships with some. Wins the respect of some students but there are regular disruptions in the learning environment.	SLP is sometimes unfair and disrespectful to the group; plays favorites. Is not respected by students and the learning environment is frequently chaotic.	
3.11	Delivery of Service: Reflection	SLP's reflection is highly accurate and perceptive, citing specific examples that were not fully successful for at least some students. SLP draws on an extensive repertoire including input from colleagues to identify alternative strategies.	SLP's reflection provides an accurate and objective description of practice, citing specific positive and negative characteristics. SLP makes some specific suggestions as to how the therapy program might be improved.	SLP's reflection on practice is moderately accurate and objective without citing specific examples, and with only global suggestions as to how it might be improved.	SP does not reflect on practice, or the reflections are inaccurate or self-serving.	
4.13	Management: Caseload	SLP continually makes decisions on eligibility, including dismissal. Provides prompt and consistent intervention to special education students. Supports general education initiatives that focus on achievement for all students.	SLP continually makes decisions on eligibility while serving a variety of special education students with speech/language services on their IEP.	SLP maintains caseload while limiting service delivery to only students who have a Communication Disorder eligibility.	SP inefficiently manages caseload and inconsistently serves students.	
5.14	Professional Responsibilities: Professionalism	SLP present self as a consummate professional and always observes appropriate boundaries.	SLP demonstrates professional demeanor/behavior and maintains appropriate boundaries.	SLP occasionally acts and/or presents self in an unprofessional manner and disrespects boundaries.	SLP frequently acts and/or present self in an unprofessional manner and violates boundaries.	



FERN RIDGE SCHOOL DISTRICT 28J

	Domain: Standard	Highly Effective 4	Effective 3	Area of Growth 2	Does Not Meet 1	Evaluator Rating
5.15	Professional Responsibilities: Collaboration	Collaborates with classroom teachers, other professionals, and peers when sharing ideas, looking at student work, and utilizing data to drive instruction.	Collaborates with classroom teachers, other professionals, and peers to share therapy ideas while looking at student work.	Meets infrequently with classroom teachers, other professionals, to share therapy ideas.	Does not meet with classroom teachers, other professionals, and peers and is not open to collaboration.	
5.16	Professional Responsibilities: Self-Improvement	SLP seeks out best practices, feedback, and suggestions, which are integrated into practice. Active participant of professional workshops, study groups, reading and/or research to improve speech-language learning.	SLP listens thoughtfully to other viewpoints and responds constructively to suggestions and criticism. Seeks out effective therapy ideas from colleagues and other sources.	SLP keeps an eye out for new ideas to improve therapy, but implementation is with mixed results. Shows minimal interest in listening to feedback and suggestions.	SLP is not open to ideas for improving therapy and learning. Is defensive and/or resistant to changing professional practices.	
5.17	Professional Responsibilities: Rules, Regulations, Laws, and Ethical Standards	SLP demonstrates professional performance and consults with colleagues regarding ethical and/or litigious situations while upholding the ethical behavior and rules and regulations as outline in the Oregon Board of Examiners for Speech Language Pathology.	SLP upholds the importance of ethical behavior rules and regulations as outlined in the Oregon Board of Examiners for Speech Language Pathology.	SLP understands the importance of ethical behavior and rules and regulations as outlined in the Oregon Board of Examiners for Speech Language Pathology.	SLP does not demonstrate ethical behavior or follow the rules and regulations as outlined in the Oregon Board of Examiners for Speech Language Pathology.	



FERN RIDGE SCHOOL DISTRICT 28J

	Domain: Standard	Highly Effective 4	Effective 3	Area of Growth 2	Does Not Meet 1	Evaluator Rating
5.18	Professional Responsibilities: Supervision <i>(when applicable)</i>	SLP supervises and trains SLP-A while providing ongoing feedback and support including information regarding students' disabilities, therapy deliver, therapy planning, and data collection while maintaining all required records on personnel they supervise.	SLP supervises and trains SLP-A while providing ongoing feedback and support, when requested, including information regarding students' disabilities, therapy delivery, therapy planning, and data collection while maintaining all required records.	SLP supervises and trains SLP-A providing limited support while maintaining all required records.	SLP fails to provide support to SLP-A and does not maintain proper records.	
5.19	Professional Responsibilities: Working with Teams	Elicits all voices in planning units, sharing teaching ideas, looking at student work and utilizing data to change instruction. Values and appreciates colleagues.	Collaborates with colleagues to plan units, share teaching ideas and look at student work. Seeks input from colleagues.	Meets regularly with colleagues to share ideas about teaching and students and includes colleagues when necessary.	Meets infrequently with colleagues and is not open to collaboration. Is not respectful of colleagues when communicating with them.	
5.20	Professional Responsibilities: Self-improvement	Seeks out best-practices, feedback, and suggestions, which are integrated into practice. Active participant of professional workshops, study groups, reading and/or research to improve teaching and learning.	Listens thoughtfully to other viewpoints and responds constructively to suggestions and criticism. Seeks out effective teaching ideas for supervisor, colleagues and other sources.	Keeps an eye out for new ideas to improve teaching and learning, but implementation is with mixed results. Shows minimal interest in listening to feedback and suggestions.	Is not open to ideas for improving teaching and learning. Is defensive and/or resistant to changing professional practices.	

Speech Language Pathologist's response:

Supervisor's Comments:

This is to certify we have read and discussed the above report: _____
Speech Language Pathologist
Date
Supervisor
Date



SPEECH LANGUAGE PATHOLOGIST SLG GOAL SETTING TEMPLATE

SLP: _____ Contract Status: _____

School: _____ School Year: _____

Administrator/Evaluator: _____ Date: _____

Grade Level: Elementary Middle School High School

Goal Type: Individual Goal Team Goal

SLG GOAL 1	
Goal-Setting Conference	Content Standards/Skills
	Assessments <input type="checkbox"/> Category 1 _____ <input type="checkbox"/> Category 2 _____
	Context/Students
	Baseline Data
	Student Growth Goal (Targets)
	Rationale
	Strategies



SLG GOAL 2				
Goal-Setting Conference	Content Standards/Skills			
	Assessments	<input type="checkbox"/> Category 1 _____ <input type="checkbox"/> Category 2 _____		
	Context/Students			
	Baseline Data			
	Student Growth Goal (Targets)			
	Rationale			
	Strategies			
Sign-Off at Initial Collaborative Meeting: Date: _____ SLP: _____ Principal: _____				
Mid-Year Review	Collaborative Mid-Year Goal Review			
	Strategy Modification			
	SLP Signature:	Date:	Administrator/Evaluator Signature:	Date:
Year-End Goal Conference	End-of-Year Data			
	Reflection on Results			
	Professional Growth Plan Implications			
	Evaluation Level	SG #1	SG #2	Overall Level:
	SLP Signature:	Date:	Administrator/Evaluator Signature:	Date:



Level 4 <i>(Highest)</i>	This category applies when approximately 90% of students met their target(s) and approximately 25% of students exceeded their target(s). This category should only be selected when a substantial number of students surpassed the overall level of attainment established by the target(s). Goals are very rigorous yet attainable, and differentiated (as appropriate) for all students.
Level 3	This category applies when approximately 90% of students met their target(s). Results within a few points, a few percentage points, or a few students on either side of the target(s) should be considered “met”. The bar for this category should be high and it should only be selected when it is clear that all or almost all students met the overall level of attainment established by the target(s). Goals are rigorous yet attainable and differentiated (as appropriate) for all students.
Level 2	This category applies when 70-89% of student met their target(s), but those that missed the target missed by more than few points, a few percentage points or a few students. Goals are attainable but might not be rigorous or differentiated (as appropriate) for all students.
Level 1 <i>(Lowest)</i>	This category applies when less than 70% of students meet their target(s). If a substantial proportion of students did not meet their target(s), the SLG was not met. Goals are attainable, but not rigorous. This category also applies when results are missing or incomplete.

The checklist ensures the goals are complete for scoring. The scoring process is facilitated by using the scoring rubric to determine whether each student exceeded, met, or did not meet the target; and the percentage of students in each category. These two tools must be used to score SLG goals to determine the educator’s impact on student learning and growth in the summative evaluation.

Level 4	Level 3	Level 2	Level 1
You must score: - 4 on both goals	You could score: - 3 on both goals, or - 3 on one goal & 4 on one goal, or - 4 on one goal & 2 on one goal	You could score: - 2 on both goals, or - 2 on both one goal & 3 on one goal, or - 3 on one goal & 1 on one goal, or - 4 on one goal & 1 on one goal	You could score: - 1 on both goals, or - 1 on one goal & 2 on one goal



Informal Observation Form A

Name: _____ Date: _____

Observer: _____ Time of Observation: _____

	Highly Effective	Effective	Concern	Comments
<u>Planning and Preparation</u> <ul style="list-style-type: none">•lesson planning•standards•assessment•environment				
<u>Classroom Management</u> <ul style="list-style-type: none">•expectations•strategies•relationships•routines				
<u>Delivery of Instruction</u> <ul style="list-style-type: none">•subject knowledge•engagement•clear objectives•makes connections•multiple strategies•differentiation				



Informal Observation Form B

Name: _____ Date: _____

Observer: _____ Time of Observation: _____

I noticed:	I wondered about:
Support/Resources Needed:	Next Steps:



Professional Growth Action Plan

Educator: _____

Assignment: _____

School: _____

School Year: _____

Professional Growth Activity:

Explanation:

Related to Domain(s) / Standards:

Domain 1: Identification and Evaluation

Standard: _____

Domain 2: Preparation and Planning

Standard: _____

Domain 3: Delivery of Service

Standard: _____

Domain 4: Management

Standard: _____

Domain 5: Professional Responsibility

Standard: _____

How will this goal improve student learning (If Applicable)?

What measurable criteria will be used to assess your goals' success (If Applicable)?

The professional growth activity has been approved between the supervisor and teacher prior to beginning the activity.

Speech Language Pathologist

Date

Supervisor

Date



Professional Growth Action Plan Part 2

	Activities/Methods	Resources Needed	Timeline	Completion Date
1				
2				
3				
4				
5				
6				
7				

How will you document evidence of professional growth?

Reflection (complete at the end of your professional growth activity):

The professional growth activity results or progress has been discussed between the supervisor and counselor at the completion of the activity.

Speech Language Pathologist

Date

Supervisor

Date



Glossary of Terms

Professional Growth and Performance Evaluation Manual

Contract Teacher: Any teacher who has successfully completed three years as a probationary teacher in Fern Ridge Schools.

Differentiation: Adapting instruction to individual learning needs.

Domain: Six (6) broad categories containing the 30 standards for teaching effectiveness.

Formal Observation: A scheduled classroom visit by a supervisor that results in some kind of written feedback from the supervisor. Formal observations include a pre- and post-observation meeting between teacher and supervisor. Probationary teachers will be formally observed two times per school year. Contract teachers may receive formal observations any time a supervisor deems necessary.

Diagnostic Assessment: An assessment to measure where students are currently in their learning (i.e., Pre-assessments). Used to focus or guide future instruction.

Formative Assessment: Ongoing assessments to measure student learning throughout instruction (i.e., On-the-Spot, Interim, Check for Understanding, Exit Tickets, etc.). Used to modify ongoing instruction.

Summative Assessment: An assessment delivered at the end of instruction to measure overall student learning.

Goal-Setting Form: Yearly form used by a teacher to identify goals. The teacher submits this form to their supervisor by October 15 and it is reviewed at the Yearly Reflection Meeting.

Growth Cycle: Contract teachers participate in the growth cycle. By October 15, teachers will submit their Professional Growth Action Plan to their supervisors. A yearly reflection meeting with their supervisors should be completed by June 1st.

Guiding Questions: Questions that teachers and supervisors use to focus their observations and reflections regarding teaching standards.

Improvement Cycle: A performance review to help determine support strategies that will lead to either a return to the growth cycle or the implementation of an Improvement Plan.

Improvement Plan: A plan may be developed and implemented when a probationary teacher has an unsatisfactory review/evaluation. If the teacher does not improve through the implementation of this plan, he/she will not be recommended for rehire.

Informal observations: The purpose of the informal observation is for the supervisor to observe effective teaching strategies and student engagement. Contract teachers will be informally observed three (3) or four (4) times per year. Observations will be followed up with written and verbal feedback from the supervisor within 48 hours.

Learning Goals: A long-term learning target (i.e., state standard or power standard). An end result of instruction.

Learning Objectives: Specific measurable activities or pedagogy for accomplishing a learning goal.



Performance Levels: Levels used to rate teachers on the standards are based on the following scale: *Highly Effective, Effective, Areas for Growth* and *Does Not Meet*. It is important to realize that although this system defines how to evaluate teachers according to standards, determinations about teacher performance can also be made according to state law, and there are instances when state law would supersede this evaluation system.

- **Highly Effective:** The teacher's skills in this content area are in the top of their field and can serve as a model and example to other teachers. There must be significant evidence for a teacher to be ranked highly effective on the evaluation rubric.
- **Effective:** The performance is strong, and there are no apparent weaknesses.
- **Basic:** The performance is satisfactory, but there are specific areas that can be improved.
- **Unsatisfactory:** The performance is unacceptable and must improve significantly.

Performance Evaluation: A conference to review mini and formal observation data in the context of the Fern Ridge Schools performance evaluation rubric.

Possible Evidence: Verification or proof of the teaching standards in action.

Probationary Teacher: Any teacher in their first three (3) years of teaching in any Fern Ridge school.

Professional Development: Ongoing, yearly training and collaborative opportunities designed to foster professional growth in order to improve student learning and teaching effectiveness.

Professional Growth Action Plan: Activities selected to improve teaching effectiveness and student learning. This plan includes one (1) to three (3) goals and will be designed yearly between a certified employee and building administrator. Each plan shall include measurable outcomes that are evidenced through data collection. This plan is reviewed at the Yearly Reflection Meeting.

Repertoire: A variety of instructional techniques or methods.

Standard: Performance criteria used by teachers to set goals and used by supervisors to evaluate or review teacher effectiveness. These 30 standards represent Fern Ridge Schools' criteria of effective teaching.

Support Strategy: Offered when a supervisor determines a teacher is not performing satisfactorily. These strategies are building based, informal and include building administrator and teacher.

Yearly Reflection Meeting: A meeting between a teacher and supervisor, held by June 1 for the purpose of reflecting on and evaluating the teacher's progress. Prior to this meeting, the teacher completes the Yearly Evaluation Form and submits to their supervisor. At the meeting:

- The supervisor and teacher review the Yearly Evaluation Form; the supervisor highlights a performance level for each standard,
- The supervisor and teacher discuss progress towards goals as detailed on the teacher's Goal-Setting Form,
- The supervisor and teacher discuss progress toward meeting the teacher's Professional Growth Action Plan, and
- The supervisor makes a written recommendation regarding continued employment.



Components of the Student Learning and Growth Goal Setting Process – Key Ideas

Content Standards/Skills

- Identifies core knowledge and skills students are expected to attain as required by the applicable standards.
- Represents the big ideas or domains of the content taught during the interval of instruction.

Context

- Identifies the students covered by the goal
- Describes the student population and considers any contextual factors that may impact student growth

Assessment

- Includes measures aligned to standards and that meet state criteria
- Provides sufficient “stretch” so that all students may demonstrate learning, or includes supplemental measures to cover the ability levels of all the students for which the goal is written

Baseline Data

- Sources of information about student learning (e.g., test scores from prior years, results of pre-assessments) including trend data, if available
- Summarizes student strengths and weaknesses

Student Learning and Growth Goal (Targets)

- Uses baseline data to determine appropriate growth
- Ambitious yet attainable targets are set for each student, tiered when appropriate so that all students may demonstrate growth

Rationale

- Demonstrates teacher knowledge of students and content
- Explains why target is appropriate for the population

Strategies

- Describes the instructional strategies aligned to the specific content and skills identified in the goal
- Differentiated to account for needs of all students and to minimize barriers to learning

Professional Learning and Support

- Identifies supports that are specific to meeting the identified goal
- Considers results of self-reflection