

# – Fern Ridge School District – Integrated Planning 2023



**Elmira Elementary**



**Veneta Elementary**



**District Office**



**Fern Ridge Middle School**



**Elmira High School**



*Fern Ridge School District Vision:  
Provide excellence for every student so that each will reach their greatest potential.*

## FRSD Mission Statement



### Relationship

A supportive and safe school environment that values diversity, and in which all students and adults feel welcomed and respected.



### Rigor

Maintain high expectations and promote academic excellence through challenging curriculum, as well as instruction that builds critical thinking skills.



### Relevance

Helping students connect and apply their education to the world of today and tomorrow.

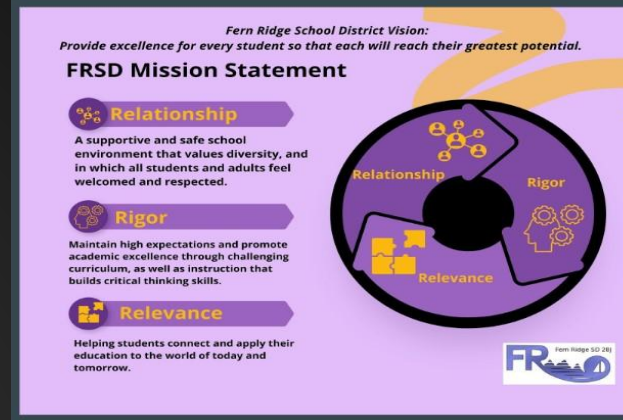




# RELATIONSHIP

- The first pillar of our district mission is **RELATIONSHIP**.
- Our goal is to *ensure a supportive and safe school environment that values diversity, and in which all students and adults feel welcomed and respected.*

- Highlights of the ongoing work around **RELATIONSHIP** includes:
  - Family-resource coordinator & Parent Supports
  - Full time counselors at each level.
  - Training staff (K-5 morning meetings, Second Steps/SEL, suicide prevention training, Sources of Strength 6-12, etc.)
  - Supporting school-community events (SANTA Project, food drives, Adopt-a-family, athletics, concerts, family fun nights, etc.).







# RELATIONSHIP BUILDING IN FRSD





# What our data says about RELATIONSHIP:

## Student Data

I feel accepted at this school for who I am:

FRMS- 87% neutral to strongly agree

EHS- 87% neutral to strongly agree

I care about other students at my school and want to see them succeed:

FRMS- 95.7% neutral to strongly agree

EHS- 92.3% neutral to strongly agree

I have the power to make a difference in how things are done in my school:

FRMS- 69% neutral to strongly agree

EHS- 66.1% neutral to strongly agree

I have at least 1 adult in this school I can go to for help:

FRMS- 88.8% neutral to strongly agree

EHS- 90.6% neutral to strongly agree

## Community Input

FRSD provides a safe and supportive school environment:

86% neutral to strongly agree

FRSD values diversity:

85.5% neutral to strongly agree

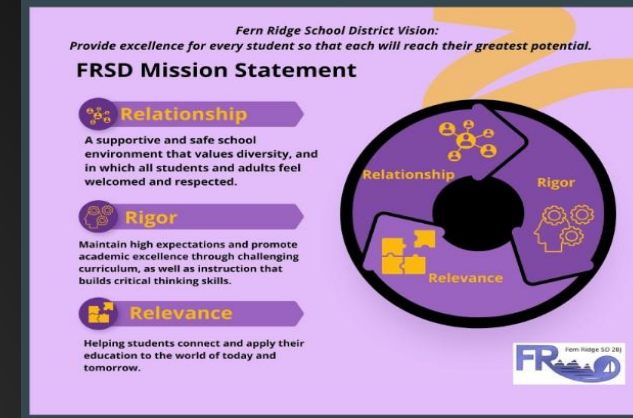
Students and adults feel welcomed and respected in FRSD:

78.8% neutral to strongly agree

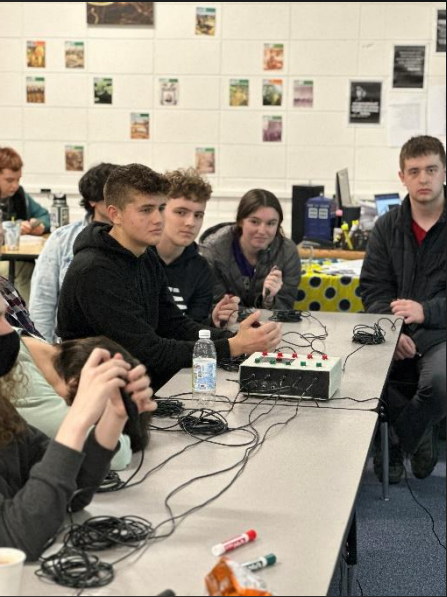
# RIGOR

- The second pillar of our district mission is **RIGOR**.
- Our goal is to *maintain high expectations and promote academic excellence through challenging curriculum, as well as instruction that builds critical thinking skills.*

- Highlights of the ongoing work around **RIGOR** includes:
  - Standards-based curriculum adoption and training
  - On-going data teams
  - Implementation of the SBAC interim assessments
  - PSATs
  - AP courses at EHS
  - Elective offerings
  - Afterschool programming
  - Summer programs K-12







RIGOR IN FRSD



# What our data says about RIGOR:

## Student Data

I feel confident I can complete difficult school work if I don't give up:

FRMS- 90.6% neutral to strongly agree

EHS- 91% neutral to strongly agree

My teachers have high expectations and want me to succeed:

FRMS- 94.8% neutral to strongly agree

EHS- 93.9% neutral to strongly agree

At school, I am provided instruction that builds critical thinking skills:

FRMS- 93.1% neutral to strongly agree

EHS- 87.1% neutral to strongly agree

## Community Input

FRSD maintains high expectations and promotes academic excellence :

74.6% neutral to strongly agree

FRSD provides instruction that builds critical thinking skills:

78.8% neutral to strongly agree



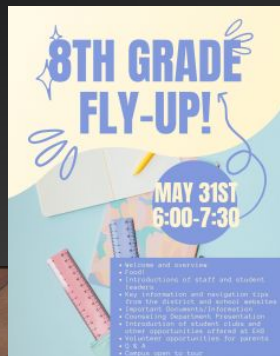
# RELEVANCE

- The third pillar of our district mission is **RELEVANCE**.
- Our goal is to *help students connect and apply their education to the world of today and tomorrow.*
- Highlights of the ongoing work around **RELEVANCE** includes:
  - Volunteer opportunities
  - Field trips
  - Assemblies
  - Current affairs
  - CTE opportunities
  - Job-shadows
  - Career days
  - Job fairs





# RELEVANCE IN FRSD





# What our data says about RELEVANCE:

## Student Data

I understand how school will impact my future:

FRMS- 91.8% neutral to strongly agree

EHS- 94.4% neutral to strongly agree

I am provided with multiple varied enrichment opportunities:

FRMS- 93.1% neutral to strongly agree

EHS- 86.3% neutral to strongly agree

School staff help me to learn about and understand opportunities for my future:

FRMS- 84.5% neutral to strongly agree

EHS- 84.6% neutral to strongly agree

## Community Input

FRSD students are provided the opportunity to connect and apply their education to the world around them:

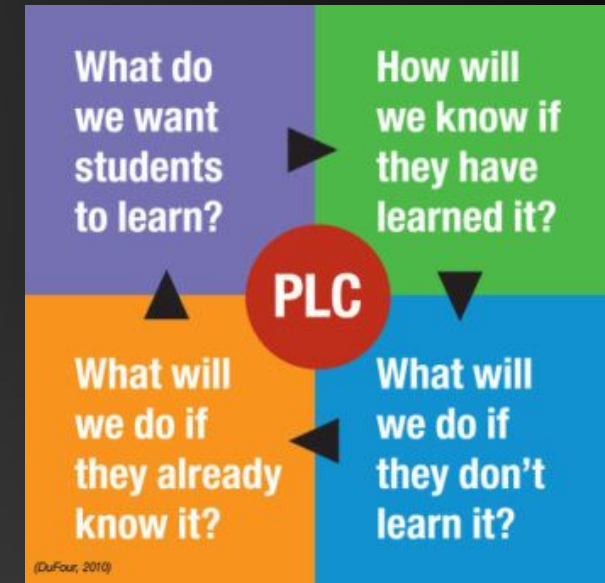
72% neutral to strongly agree

FRSD students are provided with multiple and varied enrichment opportunities:

67.9% neutral to strongly agree

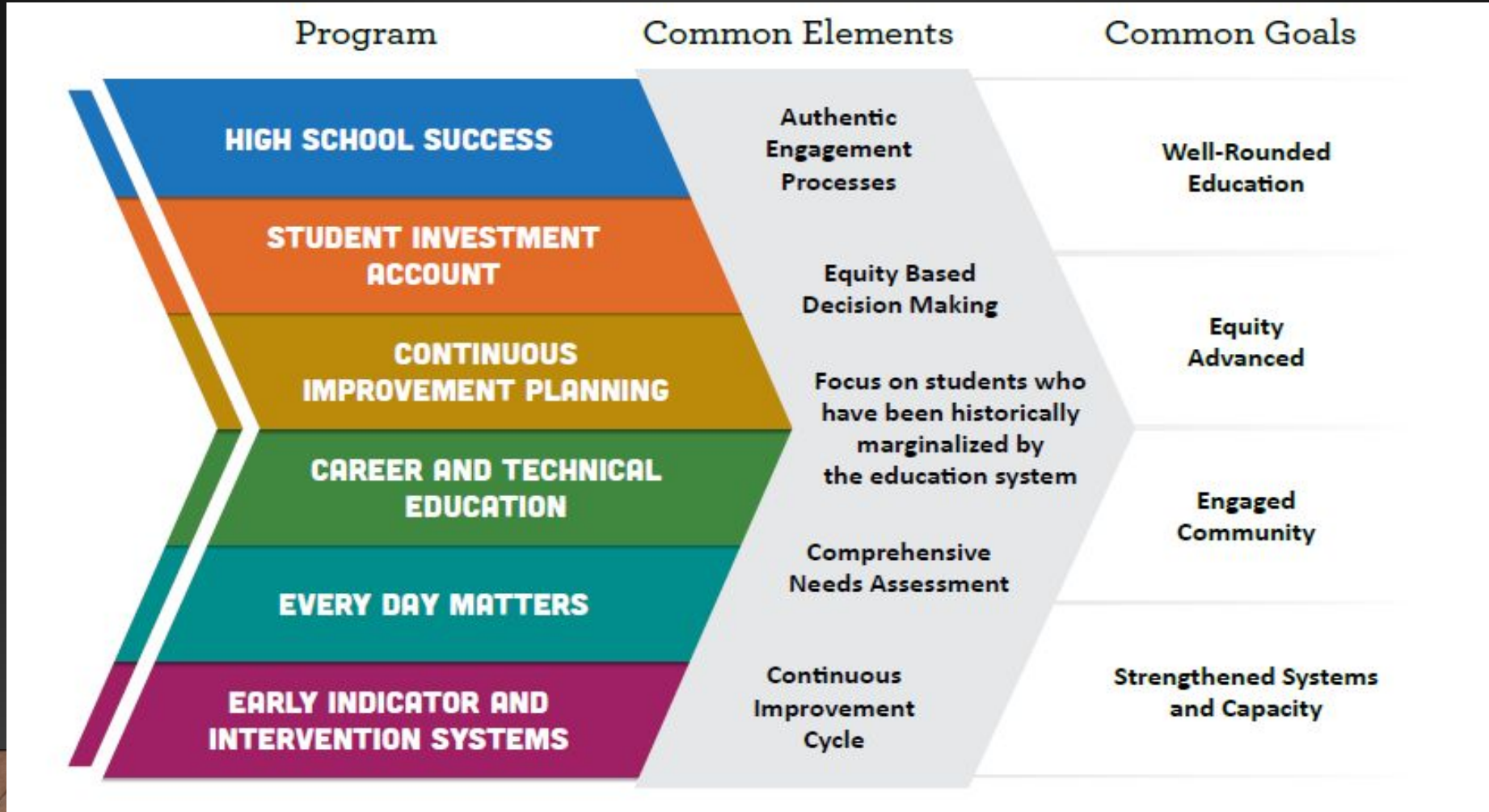
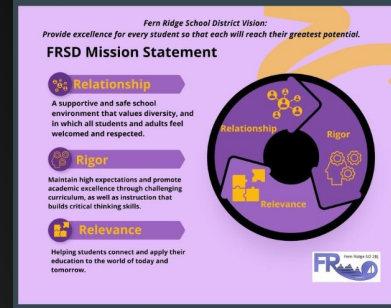
## HOW DO WE GET THERE?

- ☑ Prioritize Outcomes
- ☑ Identify Strategies
- ☑ Budget Activities
- ☑ Use data to assess progress

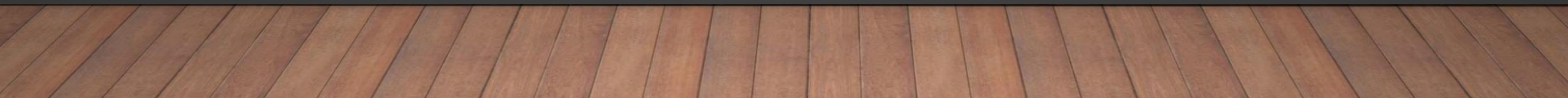
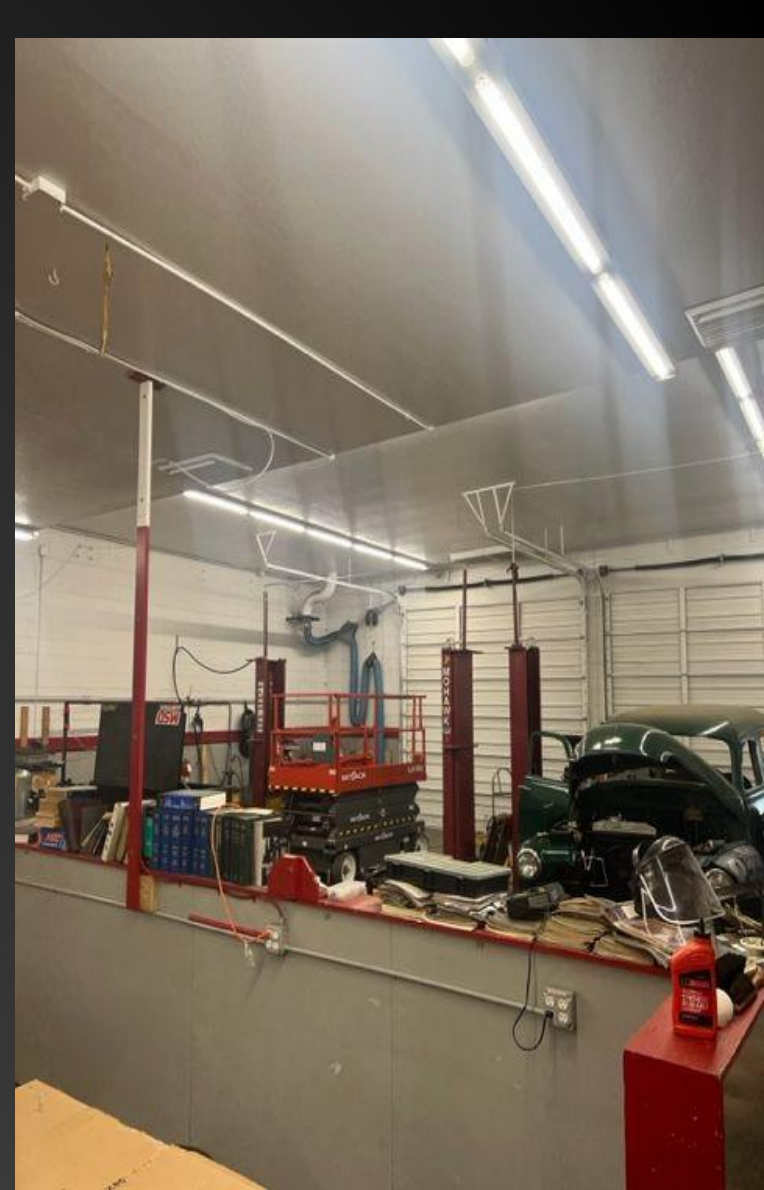




# ODE INITIATIVES AND PROGRAMS









# WHAT'S BEING FUNDED?

## HIGH SCHOOL SUCCESS – M98

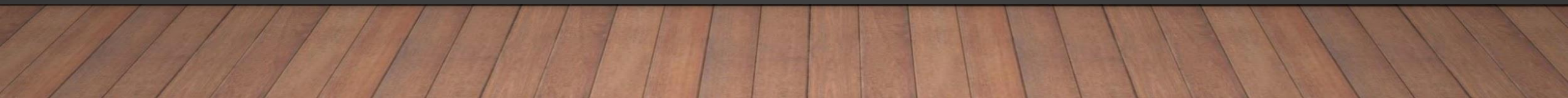
- CTE courses (welding, construction, motion graphics, film production)
- HS Counseling Services
- 8<sup>th</sup> Grade Transition
- 9<sup>th</sup> Grade Supports
- Credit Recovery Services – OPTIONS
- Dropout prevention
- College Level Education Opportunities

## STUDENT INVESTMENT ACCOUNT - SIA

- Afterschool Programming K-12
- District Nurse
- Counselors
- Behavior Supports
- Supplemental Curriculum
- Family Support Coordinator
- Staff Professional Development
- Free athletics for EHS Students









## Moving Forward- The work continues...

- Ensure ALL students have access to the supports they needed
- Continued engagement with stakeholders
- Comprehensive Needs Assessment
- Consideration of the Oregon Quality Education Model and Student Success Plans
- Review and use regional CTE Consortia inputs
- Further Examination of Potential Impact on Focal Students tied to Planning Decisions
- Development of a four-year plan with clear Outcomes, Strategies, and Activities

# DISTRICT NEEDS ASSESSMENT HIGHLIGHTS

## DATA

- Input surveys
- ORIS needs assessment with building teams
- School Improvement Plans
- Focal Groups Success
- Targeted data collection:
  - 3<sup>rd</sup> grade SBAC
  - 9<sup>th</sup> grade on track
  - Graduation rates (4 and 5 year)
  - K-12 Attendance



## KEY FINDINGS

- Continued focus on instructional improvement
  - Targeted professional development
  - Focus energy on connecting/engaging students
  - Extra supports- early!
  - Enrichment and extension activities
- COVID certainly had an impact
  - Need to strengthen student belonging
  - Desire to provide more varied enrichment opportunities both on and off campus



## Next Steps & Timeline

- Complete Budgeting Worksheet
- Complete Integrated Plan Application
- Post on website for additional input - Early March
- Present to School Board & Allow for Public Comment - March 13
- Finalize Budget Worksheet & Plan Application
- Submit to ODE by March 31