

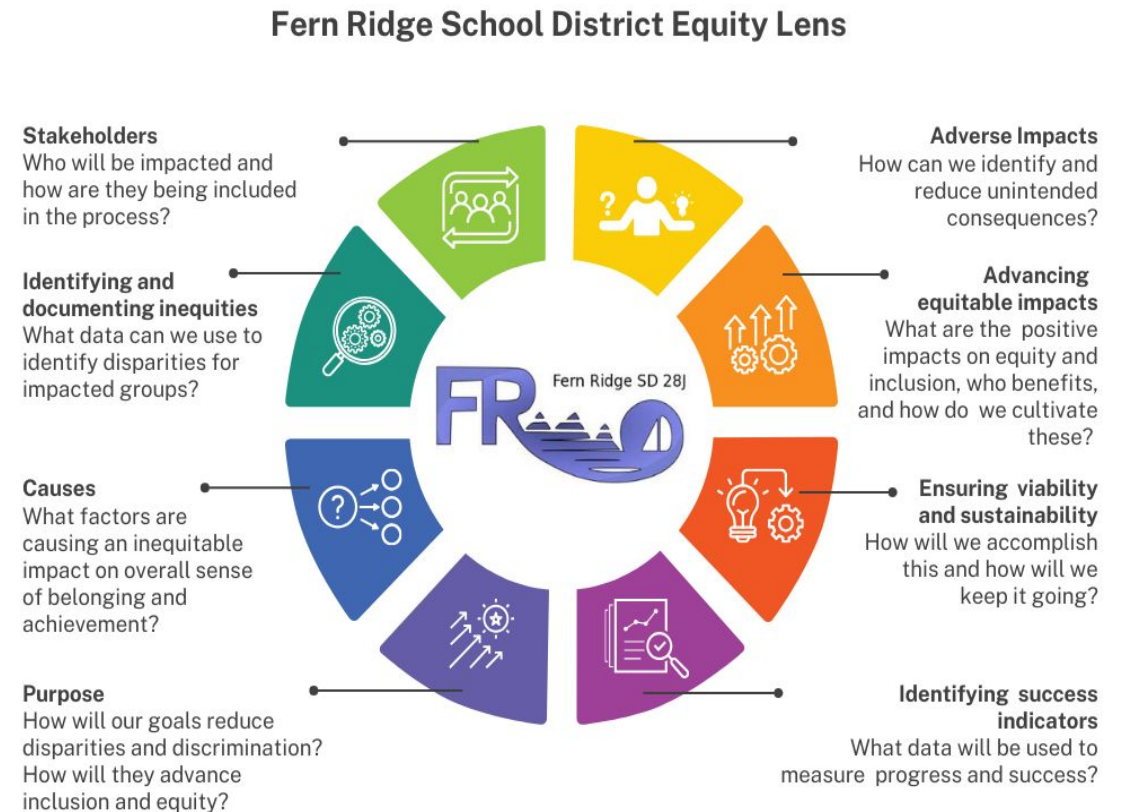


22-23 SIA Annual Report Presentation

Fern Ridge School District
Michelle Marshall, Director of K-12 Programs
November 20, 2023

SIA Annual Reporting Requirements

- SIA recipients are required by statute to review their own progress on an annual basis through an annual progress report and financial audit.
- ODE's required annual report consists of four narrative questions.
- SIA recipients are required to:
 - present their annual report to their governing board at an open meeting with opportunity for public comment,
 - and post the report to the district or charter school website.



Annual Report Narrative #1

What changes in behavior, actions, policies or practices have you observed related to SIA implementation during the 2022-23 school year? How do you see these changes contributing to the goals and outcomes in your SIA plan?

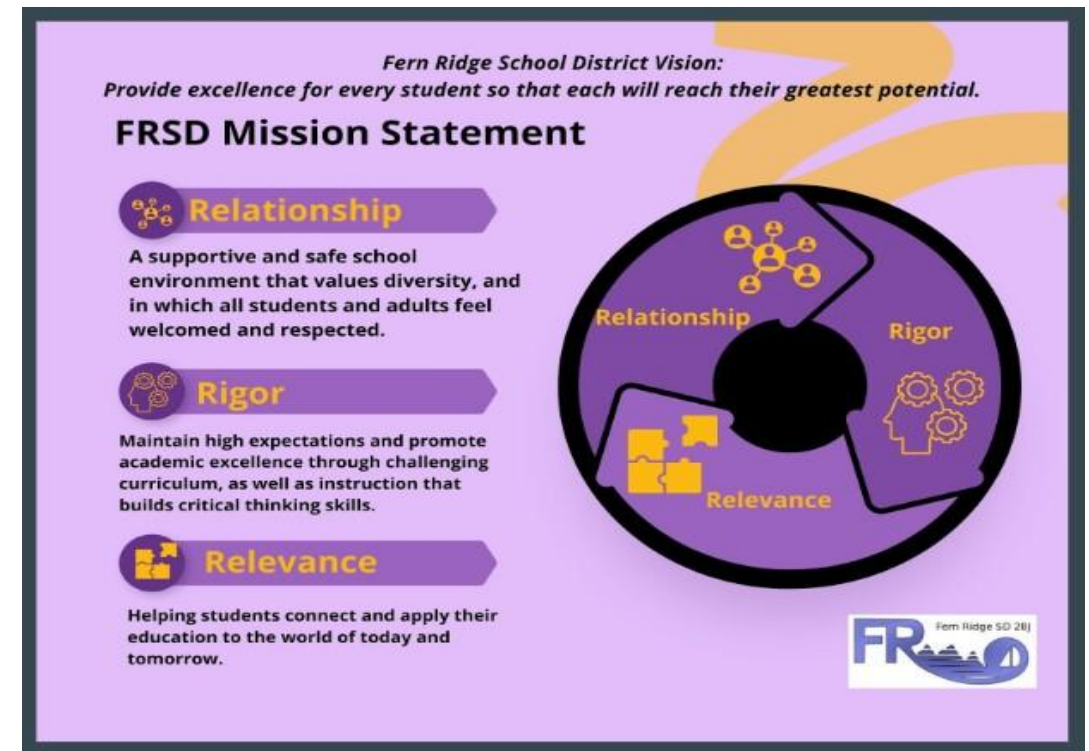
- **Student voice**- Process for collecting and sharing student input annually
- **Counselors and Mental Health Supports**- Increased K-12 supports
- **Resources for students and families**- Expanding services and opportunities
- **Cycles of engagement and input**- Consistent use of surveys and input opportunities
- **Equity Tools and Training**- Ongoing PD, use of tool, and plans to create student-friendly versions
- **Beginning stages of assessing our K-12 Data Teams**- Commitment at the district and building levels to review, assess, and align our data team processes
- **Systems review for LPGTs**- Intentional planning and discussion around activity/goal/initiative alignment to district goals



Annual Report Narrative #2

What barriers or challenges to SIA implementation have you experienced that are helpful for your community and/or state leaders to be aware of? What adjustments, if any, did you make to your SIA plan as a result of these challenges?

- **Staffing**- Continued challenges in finding highly-qualified, appropriately licensed/trained staff.
- **Ongoing Professional Learning**- lack of subs, time, workload
- **Consistent 2-way Communication**- improvements have certainly been made, challenge is to keep all stakeholders fully informed (ex. website, ParentSquare, and Board updates)
- **Stakeholder participation**- 0 participation in Integrated Plan Application Feedback survey
- **Challenges and frustration over other ODE requirements** (ex. Menstrual Dignity) that cause lack of trust or lowered confidence in school programming.



Annual Report Narrative #3

SIA implementation includes ongoing engagement with all students, focal students, families, staff, and community partners. How have relationships with or between those groups changed and/or been maintained throughout this academic year? Consider the Community Engagement Toolkit and where your efforts might land on the spectrum as you complete your response.

- **Community Engagement Night**- Our Heart of the Community event included 20 community partners that tabled and shared information with students, staff, and community. We also shared information about our Integrated Plan, Activities, and goals for the years to come.
- **Information sharing**- Ongoing updates shared with district teams, school board, and community via website, ParentSquare, and School Board sessions
- **Student input surveys**- Using consistent annual surveys in order to compare data
- **Stakeholder input surveys**- Using consistent annual surveys in order to compare data
- **Ongoing collaboration with community groups**- Make Parenting a Pleasure, Orchid Health, Gentle Dental, Kiwanis, Growing a Future, Daisy Chain etc.
- **Consistent areas of focus**- Aligned activities, goals, planning
- **Hosting and tabling at community events**- Open Houses, Conferences, etc.



Annual Report Narrative #4

As you think about what guided your choices and prioritization efforts in this year of SIA implementation, what stands out? How will what you've learned this year impact future SIA implementation efforts?

- **Focus**- Creating calendars, activities that are authentic but can also be replicated in order to collect and compare data (ex. using the same questions for student input)
- **Aligning** community, school, district, and state initiatives into a strategic plan that is both easy to read and understand
- **Continue** to support professional learning in order to align K-12 systems of support
- **Staffing**- finding and keeping the best educators for each position



What Happens Next

- Moving forward, SIA reporting will be done in conjunction with the Integrated Plan
- Integrated Plan Quarter 1 report was submitted mid October
- Continue to work towards growth in the areas of:
 - Progress Markers
 - Longitudinal Performance Growth Targets

GREAT THINGS HAPPENING AT EES



POPCORN

TODAY WE HAD OUR FIRST SURPRISE ATTENDANCE DAY! STUDENTS RECEIVED POPCORN JUST FOR BEING HERE! WE WILL HAVE A SURPRISE ATTENDANCE DAY EVERY MONTH!

MUSIC

OUR 8 WEEK MUSIC PROGRAM STARTED TODAY! MS. JEN AND MRS. HUMPHREY ARE TEACHING GENERAL MUSIC ONCE A WEEK!

