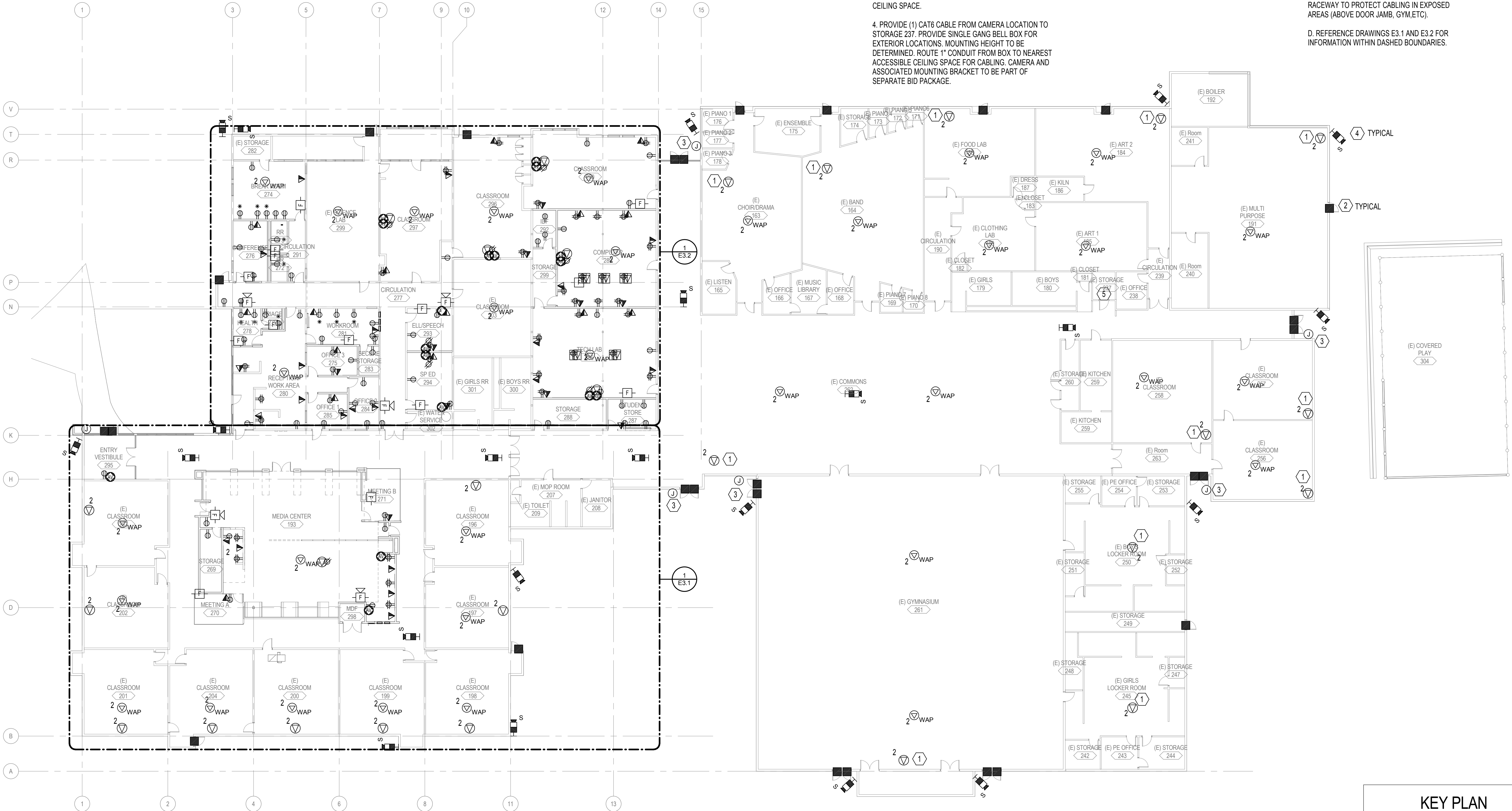


C:\revit\Local Files\14-1801 MEP\15\14-1801 MEP\15_mike.steeb.rvt
5/13/2015 4:38:10 PM



1 FLOOR PLAN - OVERALL - ELECTRICAL
1/16" = 1'-0"

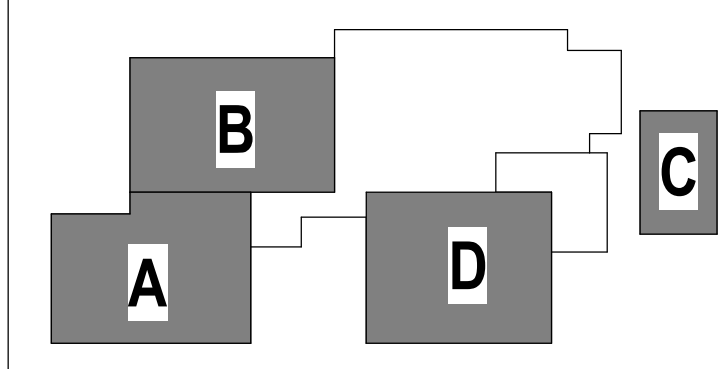
NOTES:

1. PROVIDE (2) CAT6 CABLES FOR FUTURE PAGING AND/OR AV USE. PROVIDE 20' SLACK CABLE ABOVE CEILING AT LOCATION SHOWN.
2. FUTURE DOOR CONTACT. PROVIDE UNSHIELDED TWISTED PAIR FROM CONTACT TO STORAGE 237 FOR FUTURE CONNECTION TO ACCESS CONTROL SYSTEM. PROVIDE 10' SLACK CABLE IN ACCESSIBLE CEILING SPACE AT CONTACT LOCATION AND 20' OF SLACK CABLE IN 237.
3. PROVIDE 2-GANG BELL BOX FOR FUTURE CARD READER. PROVIDE 1" GRC FROM BOX TO NEAREST ACCESSIBLE CEILING SPACE.
4. PROVIDE (1) CAT6 CABLE FROM CAMERA LOCATION TO STORAGE 237. PROVIDE SINGLE GANG BELL BOX FOR EXTERIOR LOCATIONS. MOUNTING HEIGHT TO BE DETERMINED. ROUTE 1" CONDUIT FROM BOX TO NEAREST ACCESSIBLE CEILING SPACE FOR CABLING. CAMERA AND ASSOCIATED MOUNTING BRACKET TO BE PART OF SEPARATE BID PACKAGE.
5. PROVIDE (2)CAT6A AND (10) CAT6 FROM MDF 298 TO EXISTING WALL MOUNTED RACK IN STORAGE 237 FOR COPPER BACKBONE.

GENERAL NOTES:

- A. CAT6A CABLE TO BE PROVIDED TO WAP LOCATIONS. PROVIDE 20' SLACK AT LOCATIONS SHOWN.
- B. WAP AND DATA OUTLET SHOWN EAST OF GRIDLINE 15 TO BE TERMINATED ON NEW PATCH PANELS IN EXISTING WALL MOUNTED TELECOM RACK IN STORAGE 237.
- C. SUPPORT DATA AND DOOR CONTACT CABLING WITH J-HOOKS ABOVE ACCESSIBLE CEILING. PROVIDE SURFACE MOUNTED RACEWAY TO PROTECT CABLING IN EXPOSED AREAS (ABOVE DOOR JAMB, GYM, ETC).
- D. REFERENCE DRAWINGS E3.1 AND E3.2 FOR INFORMATION WITHIN DASHED BOUNDARIES.

KEY PLAN



Project Status
PERMIT/BID ISSUE

**FLOOR PLAN - OVERALL - POWER AND SIGNAL
FERN RIDGE MIDDLE SCHOOL
INTERIOR ALTERATIONS**

E3.0
7-4-15 REV. 30
REVISIONS
DATE: 05.13.2015
ADDENDUM A



DLR Group
Architecture Planning Interiors

© 2015, DLR Group Architecture & Planning Inc., an Oregon corporation. ALL RIGHTS RESERVED.