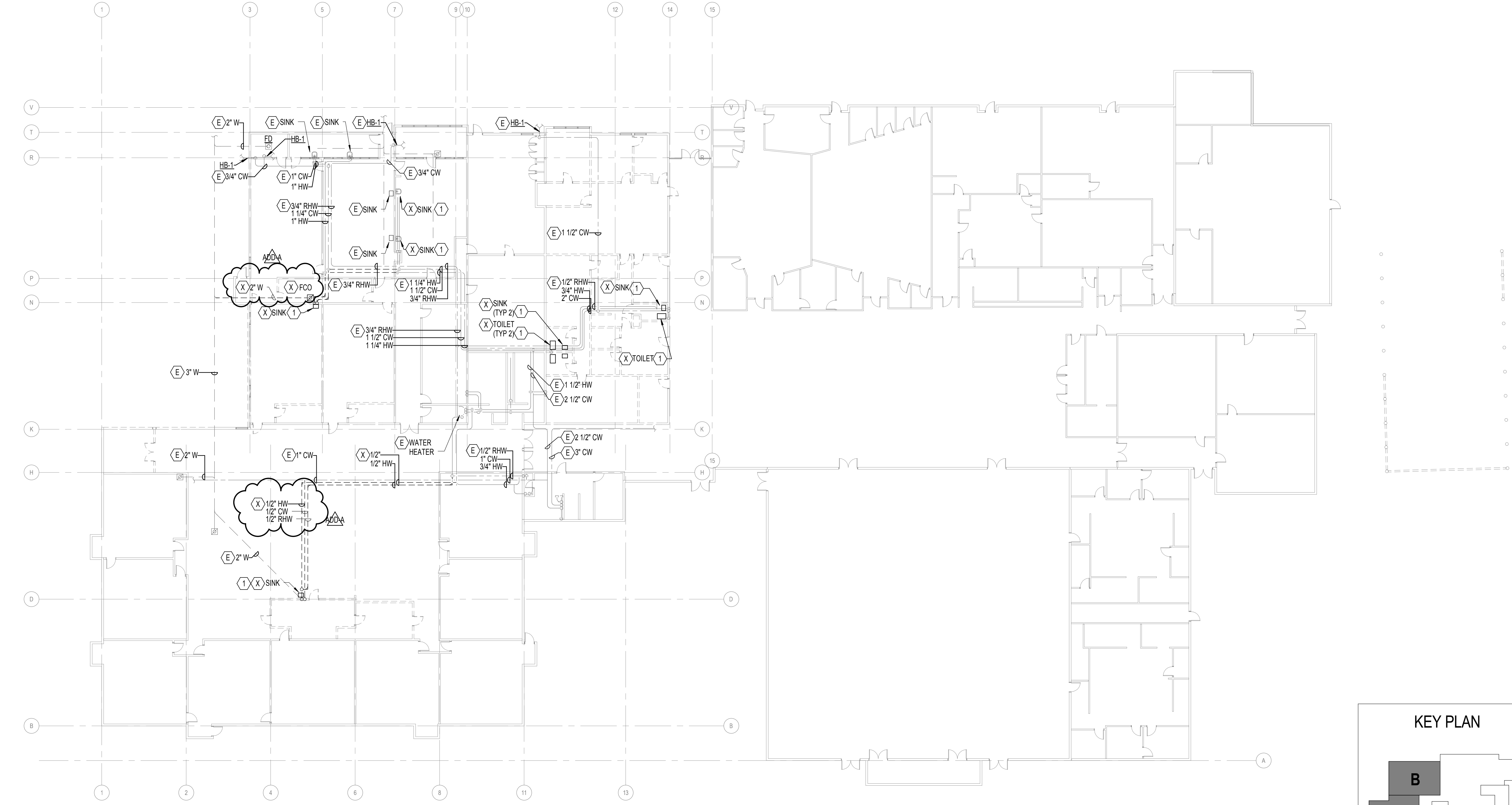


C:\revit\Local Files\14-1801 MEP\15\14-1801 MEP15_Jordan.fsk.rvt
5/13/2015 2:49:45 PM



GENERAL NOTES:
A. DETERMINE EXACT LOCATIONS OF EXISTING UTILITIES IN FIELD WHETHER OR NOT SHOWN ON DRAWINGS. EXERCISE CAUTION AND IDENTIFY LOCATIONS OF UNMARKED UTILITY LINES AS NECESSARY TO PERFORM WORK OF THIS SECTION.
B. DEMOLITION WORK SHALL INCLUDE BUT NOT BE LIMITED TO THE FOLLOWING: REMOVAL OF EQUIPMENT, SUPPORTS, ANCHORS, PIPING AND ALL APPURTENANCES WHERE INDICATED ON THE PLANS.
C. REMOVE EQUIPMENT, PIPING, AND ASSOCIATED ITEMS AS SHOWN OR RELATED TO EQUIPMENT TO BE REMOVED. CAP PIPING AT NEAREST LIVE BRANCH.
NOTES:
1. DEMO EXISTING BRANCH PIPING BACK TO MAIN AND CAP.

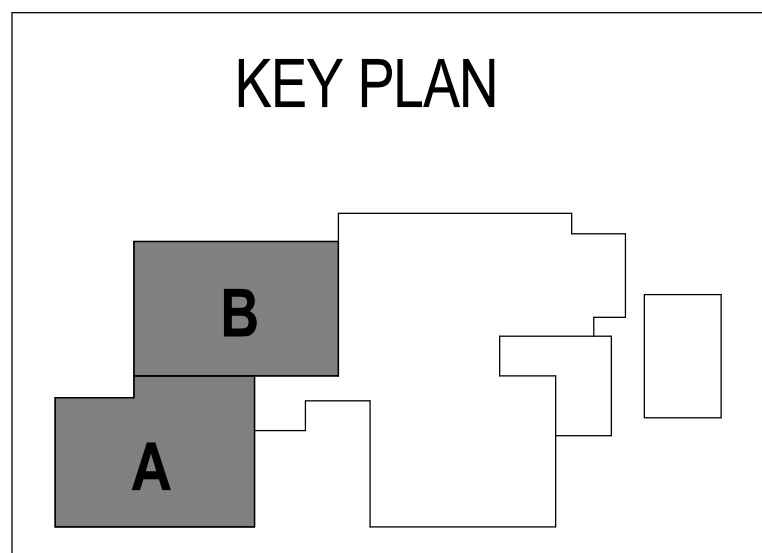
REGISTERED PROFESSIONAL
18806
John C. Young
01/17/1995
JOHN C. YOUNG
4/22/15
Project Status
PERMIT/BID ISSUED

DEMO FLOOR PLAN - OVERALL - PLUMBING
FERN RIDGE MIDDLE SCHOOL
INTERIOR ALTERATIONS

PD1.1
74-13107-30
Issue Date: 04-29-2015
REVISIONS
ADA 03.13.2015 Address A



DLR Group
Architecture Planning Interiors
© 2015, DLR Group Architecture & Planning Inc., an Oregon corporation. ALL RIGHTS RESERVED.



1 DEMO FLOOR PLAN - OVERALL - PLUMBING
1/16" = 1'-0"